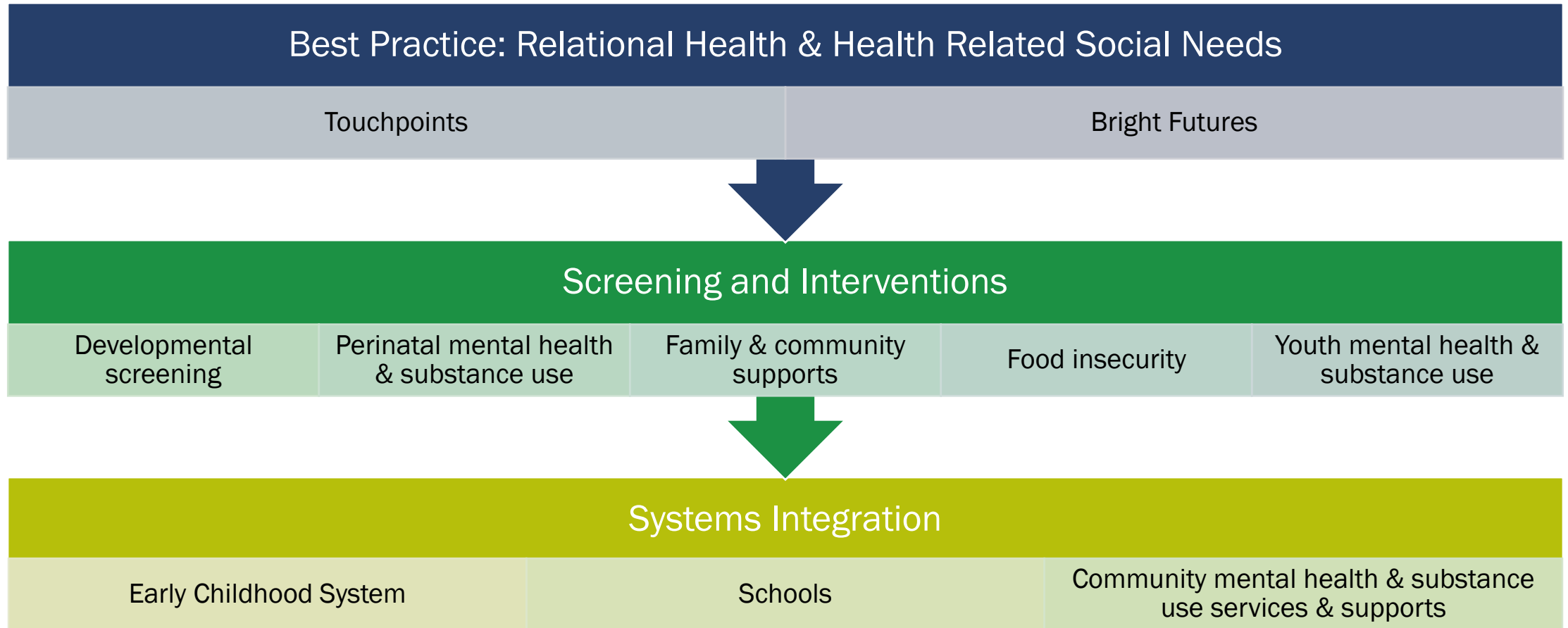




Pediatric Training: Medical Home and Early Childhood System Partnerships

October 18, 2024

Learning opportunities and quality improvement focused on pediatric best practice, office systems design, and connection to Vermont's services and supports



Session	Timeline
Promoting Lifelong Health for Infants, Children, Youth and Families	<i>Archived on the Blueprint site</i>
Touchpoints Training (in full)	January and February 2025
Medical Home and Early Childhood System Partnerships	Today!
Developmental screening and referral	November 2025
Perinatal substance use	December 2025
Perinatal mental health	January 2025
Mental health-medical home partnerships	February 2025
School-medical home partnerships	March 2025
Youth mental health	March 2025
Youth substance use	April 2025
Team-based care	May 2025
Food insecurity	June 2025
Family and community supports	June 2025
Interpersonal violence	July 2025
Early childhood partnership meetings	Ongoing

Objectives

- (Re)introduce you to key partners and programs in the early childhood system
- Share examples of successful integrative models
- Identify opportunities for medical homes to leverage early childhood experts in their region for team-based care

Jargon Buster!



CIS

Children's Integrated Services

PCC

Parent Child Center

EI

Early Intervention – part of CIS

Strong Families Vermont

Vermont's home visiting system – part of CIS

BBF

Building Bright Futures, not to be confused with Bright Futures (AAP) or Bright Futures Information System (child care)

WIC

Women Infants and Children – supplemental nutrition for pregnant people and children up to age 5

HMG

Help Me Grow

DULCE

Developmental Understanding and Legal Collaboration for Everyone

ECFMH

Early Childhood and Family Mental Health – part of CIS

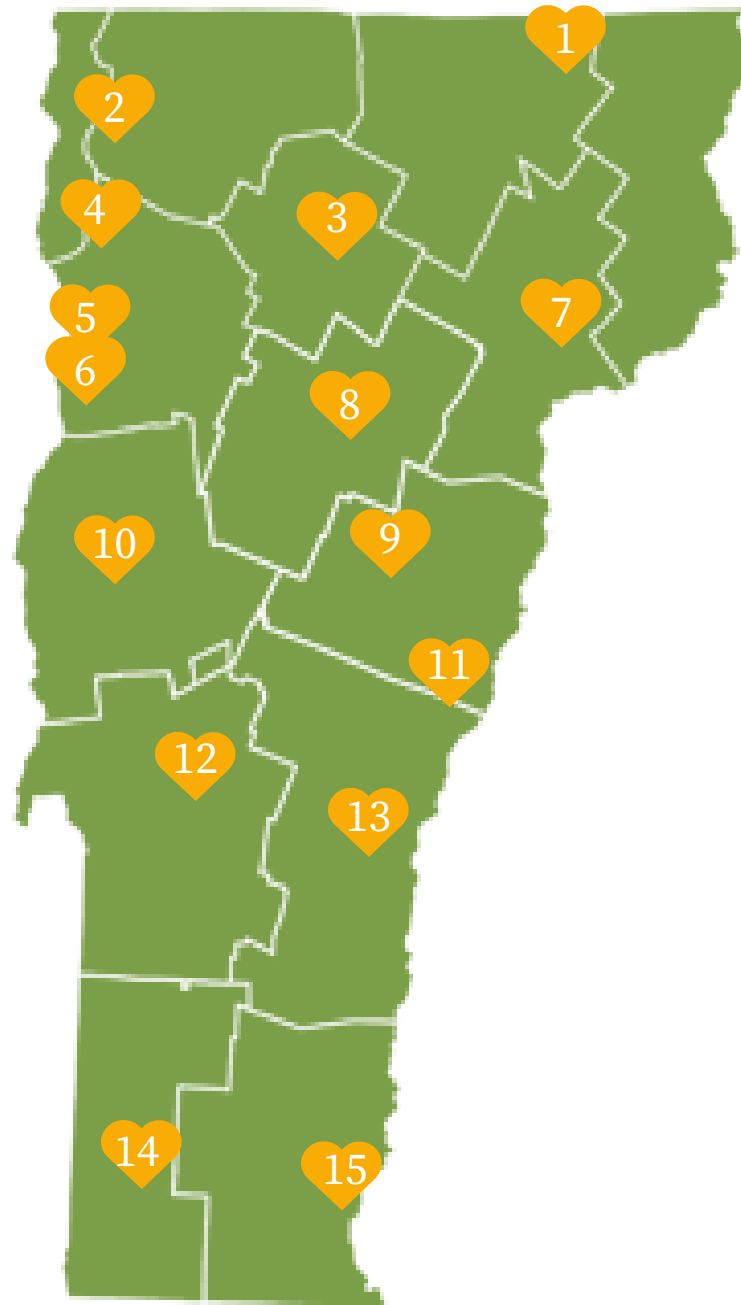
Who are Your Partners?!

1. CIS Coordinator _____
2. PCC _____
3. WIC _____
4. FCH Coordinator _____
5. BBF Coordinator _____
6. Child Care Resource and Referral _____
7. Help Me Grow Child Development Specialist _____



Parent Child Centers

Supporting Vermont's Parent Child Centers through **leadership, advocacy** and **collaboration** with key partners to achieve the best outcomes for families.



- 1 NEKCA Parent Child Center North
Newport, VT
- 2 Parent Child Center of Northwestern
Counseling & Support Services
St. Albans, VT
- 3 Lamoille Family Center
Morrisville, VT
- 4 Milton Family Community Center
Milton, VT
- 5 Janet S. Munt Family Room
Burlington, VT
- 6 Lund Parent Child Center
South Burlington, VT
- 7 NEKCA Parent Child Center South
St. Johnsbury, VT
- 8 Family Center of Washington County
Montpelier, VT
- 9 Orange County Parent Child Center
Tunbridge, VT
- 10 Parent/Child Center of Addison County
Middlebury, VT
- 11 The Family Place
Norwich, VT
- 12 Rutland County Parent Child Center
Rutland, VT
- 13 Springfield Area Parent Child Center
Springfield, VT
- 14 Sunrise Family Resource Center
Bennington, VT
- 15 Windham Southeast School District
Early Education Services
Brattleboro, VT

PCCs Support Children and Families Comprehensively

- PCCs established in Vermont statute in late 1980s and further enhanced through Act 150 in FY'23.
- Fifteen (15) community-based family resource centers located across all 12 regions of Vermont that provide children, youth, and families with strength-based, holistic, and collaborative services.
- As outlined in legislation, each PCC is responsible for providing eight (8) core services to families with young children on behalf of the state.



The Parent Child Center Network provides collaborative leadership, advocacy, and support to achieve the best outcomes for Vermont's children, youth, and families.

Parent Child Centers

WE SAY "YES!" TO FAMILIES

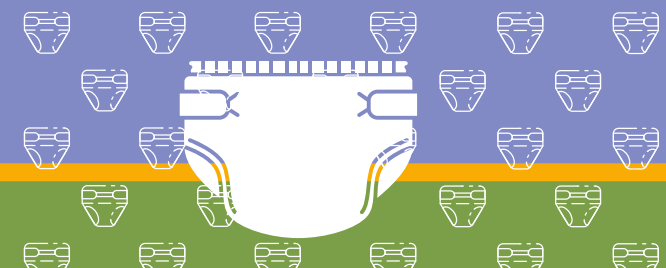


Our Network is comprised of **15** Parent Child Centers across Vermont dedicated to supporting and strengthening families every day. Our strengths-based, multi-generation approach serves both children and their caregivers through our 8 Core Services and then some!
We fill a vital role in our communities by meeting families where they are and cultivating deep relationships at critical moments.

We served **18,656** children and **17,696** parents*

We meet every family with kindness and open doors to connections, supports, and services that help them thrive. We do this by building partnerships with families to meet their short and long-term goals. From home visiting to basic needs such as food and diapers, we are there for families. Speaking of diapers...

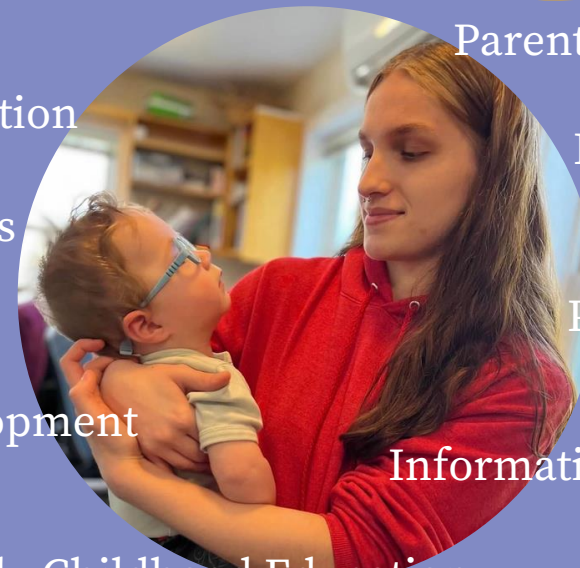
Over **200,000** diapers were distributed in just the last 6 months!



8 Core Services ...AND THEN SOME!

All Parent Child Centers in Vermont offer these core services:

- Parent Education
- Concrete Supports
- Community Development
- Early Childhood Education
- Parent Support
- Home Visits
- Playgroups
- Information & Referral



This program has been so incredibly helpful to me as a new mom. I have gained confidence and a better understanding of what is developmentally appropriate for a baby. **My stress level has gone down and I am able to enjoy motherhood.**

HEART Program Mom,
PCC of Northwestern
Counseling & Support
Services

In addition, each PCC offers a variety of unique services that reflect each region's needs. All our programs and services help strengthen families through tiered levels of support.

*we use parents as a term inclusive of all caregivers who play a parenting role

8 Core Services Delivered by All 15 PCCs

- ① Playgroups
- ② Parent support groups
- ③ Concrete supports
- ④ Community development
- ⑤ Parent education
- ⑥ Information and referral
- ⑦ Home visits
- ⑧ Early childhood services



Impact Stories

 **15,800**
Home Visits



It's one of the things I have on my weekly plate right now **that I actually look forward to**. It's like, that's really going to make me feel better about everything I'm dealing with.

Dad's Group Participant,
The Family Place



Brooke and her son, Logan
with the key to their new apartment!



Housing

Lack of affordable housing continues to impact youth and families resulting in increasing homelessness. Providing stability and essential needs becomes more difficult. PCCs walk alongside families in navigating the housing market and meeting personal, employment, and housing goals.



Having this opportunity will help my daughter and myself with basic needs but also will open whole new doors for me to attend college and work, and to offer my daughter a solid start.

I can't thank everyone enough for making this miracle come true.



SJL Justice Family Center
Vehicle Recipient

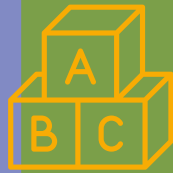


Crisis Relief

Parent Child Centers stepped up to help Vermont families who were affected by this summer's historic flooding. We brought food and essentials to FEMA sites, helped displaced families secure temporary shelter, sponsored food and clothing drives, and connected families to resources to muck out, repair, and restore their damaged homes.



Montpelier



787
Playgroups

of parents feel their PCC had a positive impact on their family

99%



As a mom of 3 young children, I've been using the services provided by the family center for as long as I've walked my parenting journey. **I am oh so grateful for the services that you all offer our community.** I've been going to baby chat and breastfeeding group since 2017 when my oldest was born. The connection made and the support given made the walk into new momhood something that was easier to do. When my child got a little older, we added playgroups and it was such a joy to watch his skills grow. The parent classes joined, which falls under my self care part of parenting. It is so amazing to have the opportunity to learn something new and know that the kids have a fun and safe place to play or join in the class.



Mom, Lamoille Family Center



Food

The cost of food has increased significantly this year, resulting in more families who face food insecurity. Parent Child Centers offer families food access, cooking classes, and support in utilizing benefits that help keep nutritious food on the table.



Responding to Community

Addressing Family Needs through Diverse, Cross-Sector Partnerships



Strongly Leveraged + Strongly Integrated

Local partnerships with cross-sector service providers in each region – childcare & schools, mental/physical health, business sector, shelters, food shelves, etc.

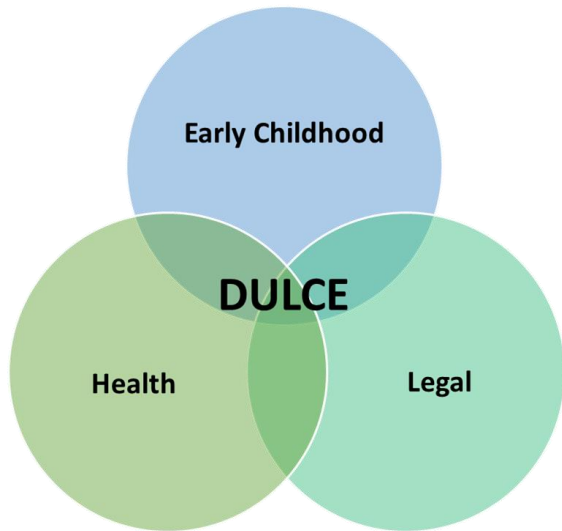
Regular communication with state agency leadership

DULCE partnerships between PCC's, area health care providers, VT Legal Aid

Children's Integrated Services

Childcare referral and financial assistance program support agencies embedded directly in communities

Developmental Understanding and Legal Collaboration for Everyone (DULCE)

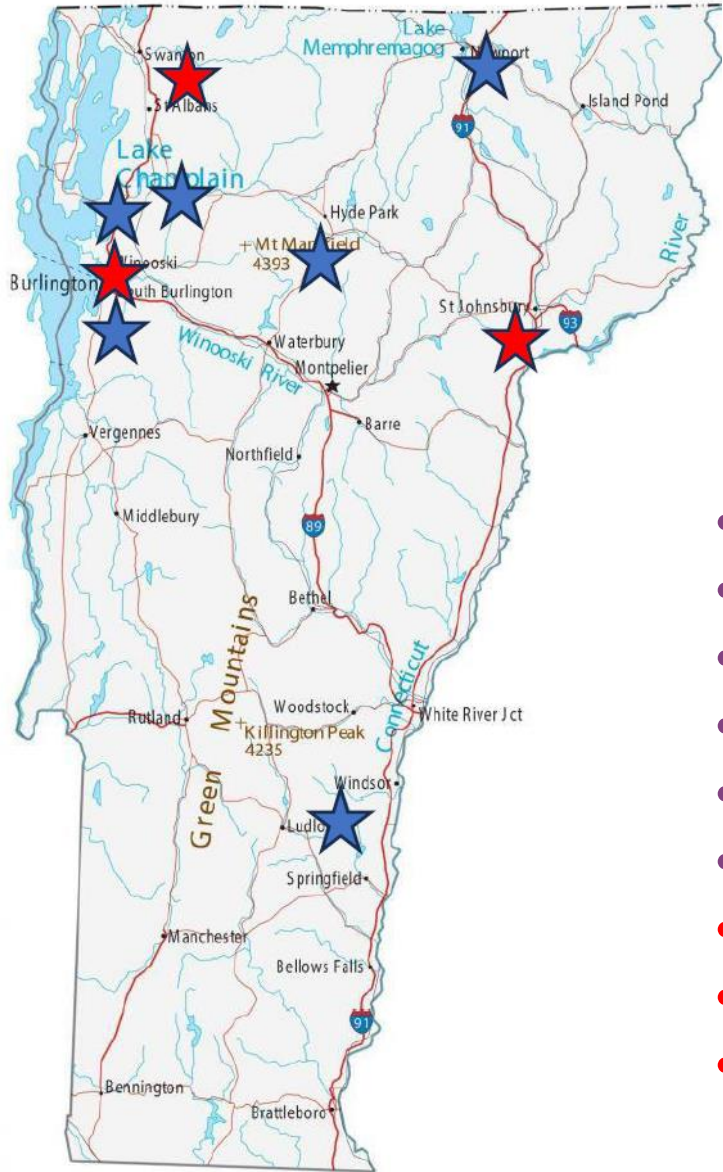


A model for connecting all families with infants—particularly families struggling with limited resources—to a **local community's system of care and supports** from the moment the children are born that **integrates pediatric, legal and early childhood services**

DULCE is a **universal approach** for families with **infants 0-6 months** in **pediatric primary care**

DULCE **bolsters family strengths** via partnerships with families that include:

- Supporting parenting skills and parent-infant relationships
- Proactively detecting needs and addressing social determinants of health (SDOH)



Vermont DULCE Sites

- Lamoille Family Center ● Lamoille Health Partners
- Lund ● Timber Lane Pediatrics South Burlington
- Lund ● Timber Lane Pediatrics North Avenue
- Northeast Kingdom Community Action ● North Country Pediatrics
- Northwest Counseling & Support Services ● Timber Lane Pediatrics Milton
- Springfield Area Parent Child Center ● Mount Ascutney Pediatrics
- Northwest Counseling and Support Services ● Monarch Maples Pediatrics
- Northeast Kingdom Community Action ● St. Johnsbury Pediatrics
- The Family Room ● Community Health Centers-Riverside

- Blueprint for Health funded
- Federal HRSA-grant funded

Family Impressions of DULCE

“[DULCE] could change your whole experience at the pediatrician and just make it more warm and welcoming.”

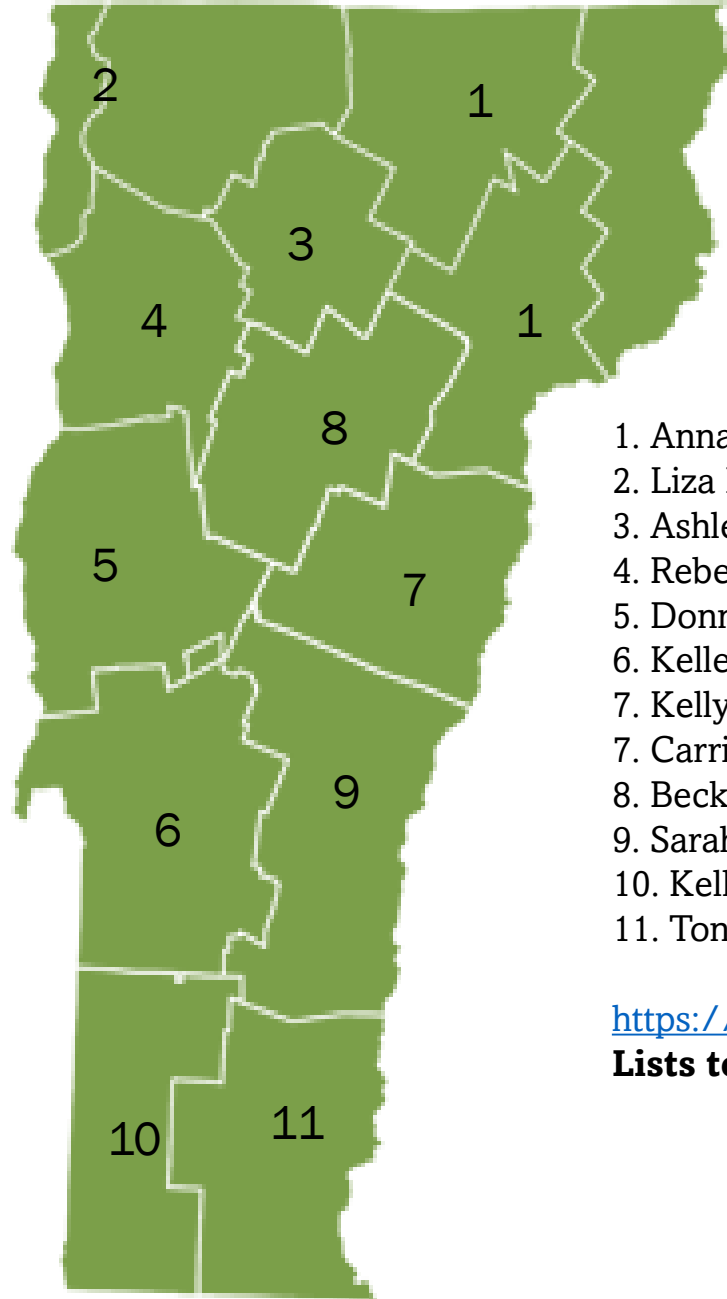
“[DULCE is] a support person to help you transition into motherhood with all the challenges that someone might face. Having someone who has, you know, the answers.”

“[DULCE] is way more than a case manager or social worker; it’s an extended part of your family. You feel like they just give you way more support and listen to you.”

“This program has made us feel safe, heard and supported in every way possible... [Our family] now has the opportunity to thrive in the face of the chaos that is our life at present.”

“[DULCE] helps support you and make you the best version of yourself as a mom. Honestly, that’s what it did for me.”

Children's Integrated Services



1. Anna Maguire – Northeast Kingdom Community Action
2. Liza Boyle – PCC of Northwestern Counseling & Support Services
3. Ashley Brown – Lamoille Family Center
4. Rebecca Zopf – Howard Center
5. Donna Bailey – Addison County Parent Child Center
6. Kelley Todriff – Rutland County Parent Child Center
7. Kelly Wallace – The Family Place (Hartford Area)
7. Carrie Aldrich – Orange County Parent Child Center (Orange Co. Area)
8. Becky Coleman – Family Center of Washington County
9. Sarah Rose – Springfield Area Parent Child Center
10. Kelly Belville – Sunrise Family Resource Center
11. Tonya Kangas – Winston Prouty Center for Family & Child Development

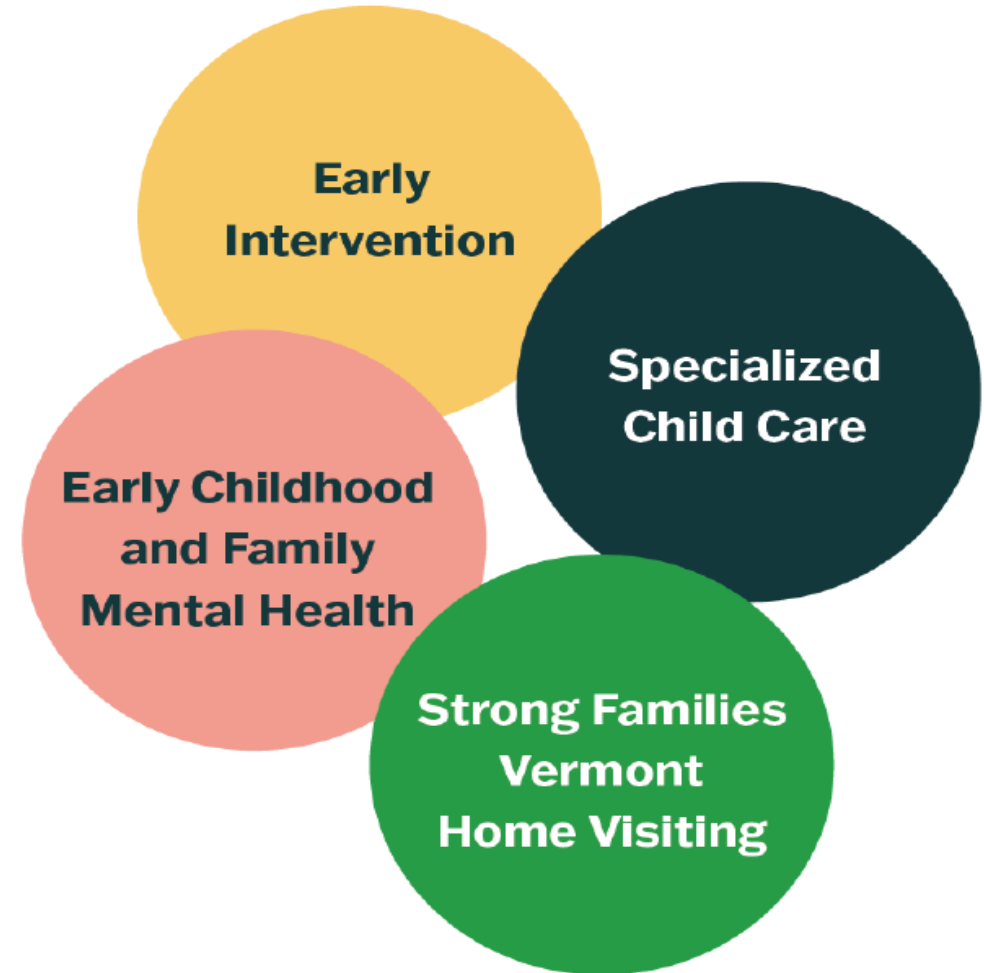
<https://dcf.vermont.gov/contacts/partners/cis>

Lists towns covered by each region!



Children's Integrated Services

- **Visits**
 - Home, virtual, or location of choice
 - May be weekly or once or twice a month
- **Coordination of care**
 - Validated screenings and assessments
 - Social determinants of health
 - Referrals and connection to resources
- **Parental support**
 - Development-centered parenting skills
 - Perinatal mental health
 - Safe sleep, preventing unintended child injuries, and nutrition





Strong Families Vermont supports pregnant people and parents through home visits delivered by professionals using a continuum of services. Home visitors partner with each family to set goals and promote optimal development, health and wellbeing. Home visits also provide an opportunity for early screening and identification of potential challenges facing families, as well as connections to the broader array of Children's Integrated Services (CIS) and other local services and supports.



SUSTAINED HOME VISITING

Nurse Home Visiting Program
Registered nurses from home health agencies deliver a long-term, structured, evidence-based home visiting program for families including at least 25 visits during pregnancy up to age two. The program improves maternal and child health and family economic self-sufficiency, promotes optimal child development, prevents child abuse and neglect, and coordinates referrals to community resources.

Family Support Home Visiting Program
Family support professionals from CIS partner agencies deliver a long-term, evidence-informed home visiting program for families through regular visits up through age five. The program strengthens the parent-child relationship, builds social connections, prevents child abuse and neglect, and promotes optimal child development and school readiness.

RESPONSIVE HOME VISITS

Children's Integrated Services teams work together to connect families with Family and Child Health nurses and/or Family Support workers to provide regular home visits in response to time-limited needs. These visits support and strengthen families' health, wellbeing, parenting skills, social connections and ability to address stressors.

UNIVERSAL HOME VISITS

Many communities in Vermont offer universal home visits through a range of community partners working together to ensure every family receives 1-3 visits during pregnancy and in the first months of parenting. These visits take many forms to provide a warm welcome and promote social connections, check in on the health and wellbeing of parents and baby, and share information about community resources to meet their needs.



<https://dcf.vermont.gov/services/cis>

Child Care Support Services

For children up to the age of 13

The **Child Care Financial Assistance Program**, also known as subsidy, can help families pay for child care.

Child Care Referral is available to help support families looking for care, in need of information about quality child care and current openings.

dcf.vermont.gov/contacts/partners/cccsa



Help Me Grow Vermont

One Connection. Many Resources.

Offering a **no wrong door approach**, Help Me Grow is a **free service** to connect pregnant individuals and families with young children to community resources.

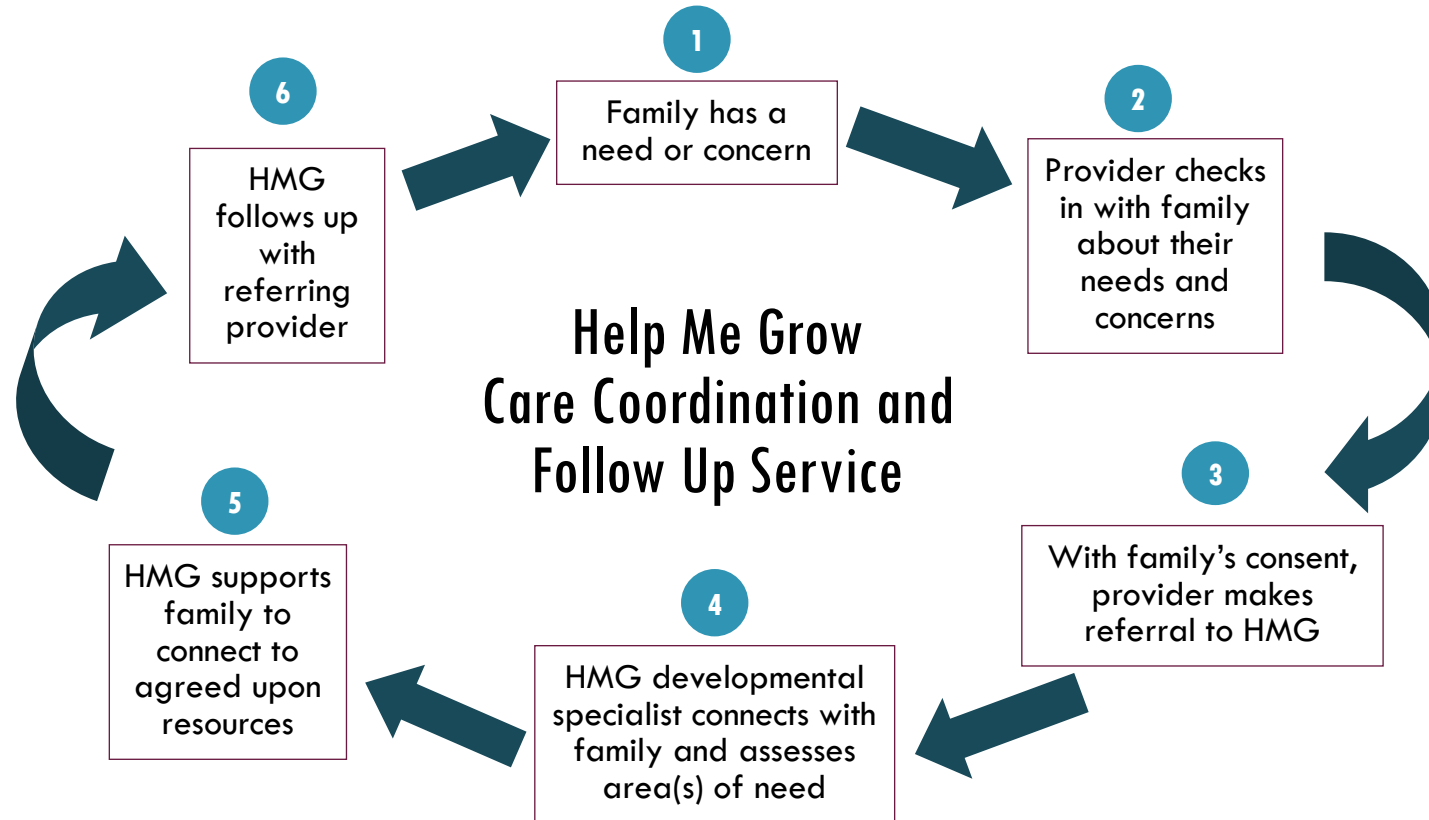
One referral to Help Me Grow connects families with young children to many services like:

- Perinatal support, treatment, and resources
- **Children's Integrated Services** for specialized services: early intervention, nurse and family support home visiting, specialized childcare, infant, child and family mental health
- Treatment and supports for substance use disorder during pregnancy
- Developmental screening (ASQ-3/ASQ:SE-2)
- Childcare, preschool, Head Start, playgroups, parenting classes and more
- WIC and resources for basic needs like food and housing



<https://www.helpmegrowvt.org/form/referral-form>

Refer a Family and Help Me Grow Follows Up with You



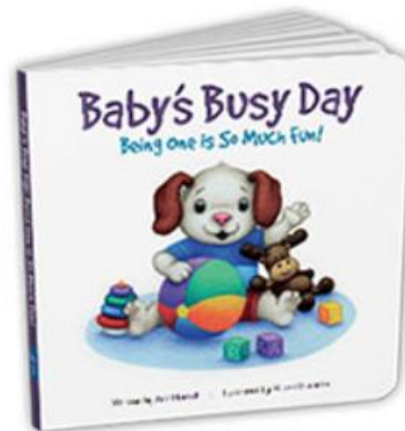
Engage Families with Free Help Me Grow Materials

Help families understand early child development and celebrate milestones! Contact your local Family and Child Health coordinator
OR
mail us at info@helpmegrowvt.org to request materials for families.



Centers for Disease
Control and Prevention

www.cdc.gov/actearly
1-800-CDC-INFO



Building Bright Futures: Monitoring Vermont's Early Childhood System



Regional Councils - on-the-ground, live monitoring of the needs of kids, families, communities, educators and providers


Data - information on the status and trends of outcomes for children and families, as well as services & programs statewide

Vermont Early Childhood Action Plan (VECAP) Committees - monitoring and implementing strategies and elevating priorities and recommendations to move forward


VECAP Summit - where each partner or entity within our system has the opportunity to document progress to create change based on the plan



Your Local Medical Home and Early Childhood System Partnership



What's working well?



What has been challenging?



Report back

Questions?



Evaluation: Please take 2 to 3 to complete before we wrap-up!

Reminder of today's objectives:

- (Re)introduce you to key partners and programs in the early childhood system
- Share examples of successful integrative models
- Identify opportunities for medical homes to leverage early childhood experts in their region for team-based care

Next sessions:

Thursday, November 7, 2024: **Family-Engaged Developmental Monitoring**

Thursday, December 5, 2024: **Perinatal Substance Use**

Evaluation Link:

<http://survey.alchemer.com/s3/8011730/blueprint-learning-session-survey>





Thank you!

Let's stay in touch.

Email: Ilisa.Stalberg@vermont.gov

Web: healthvermont.gov

Social: [@healthvermont](https://twitter.com/healthvermont)