

DULCE

- **Developmental Understanding** - Supporting the relational health of infants and their families – in collaboration with the Brazelton Touchpoints Center.
- **Legal Collaboration**- Helping families access the concrete supports they want and are legally entitled to.
- **Everyone**- reaching families where they already bring their babies – universal access in primary care clinics.

The Intervention

- **First 4 well-child visits:** screening for maternal depression and barriers to concrete supports, touchpoints-informed focus on the baby's developing temperament, personality, anticipatory guidance and related parent coaching.
- **6-month visit:** wrap-up to the intervention, transition plan implementation to assure ongoing support within the family-centered medical home.
- **Weekly interdisciplinary case review:** assures all positive screens are addressed on ongoing basis.
- **Leveraging of legal partnerships throughout:** to help families overcome barriers to concrete supports (including rapid response representation).
- **Continuous Quality Improvement:** to monitor implementation and allow data-based adaptation to local environments.

Vermont DULCE sites

- Lamoille Family Center ● Lamoille Health Partners
- Lund ● Timberlane Pediatrics South Burlington
- Northeast Kingdom Community Action ● North Country Pediatrics
- Northwest Counseling & Support Services ● Timberlane Pediatrics Milton
- Springfield Area Parent Child Center ● Mount Ascutney Pediatrics
- Northwest Counseling and Support Services ● Monarch Maples Pediatrics
- Northeast Kingdom Community Action ● St. Johnsbury Pediatrics
- The Family Room ● Community Health Centers-Riverside



Family Engagement

“DULCE offers **the emotional and human support** that families need.”

Early Childhood Representative

“Parent involvement is incredibly important to us. We want to roll things out in a way that families feel comfortable in accessing resources. We want parent and caregivers to know we value their feedback as experts on their child.”

PCC Lead

“This program has **made us feel safe, heard and supported in every way possible**... [Our family] now has the opportunity to thrive in the face of the chaos that is our life at present.”

Family

“[DULCE is] a support person to help you transition into motherhood with all the challenges that someone might face. Having someone who has, you know, the answers.”

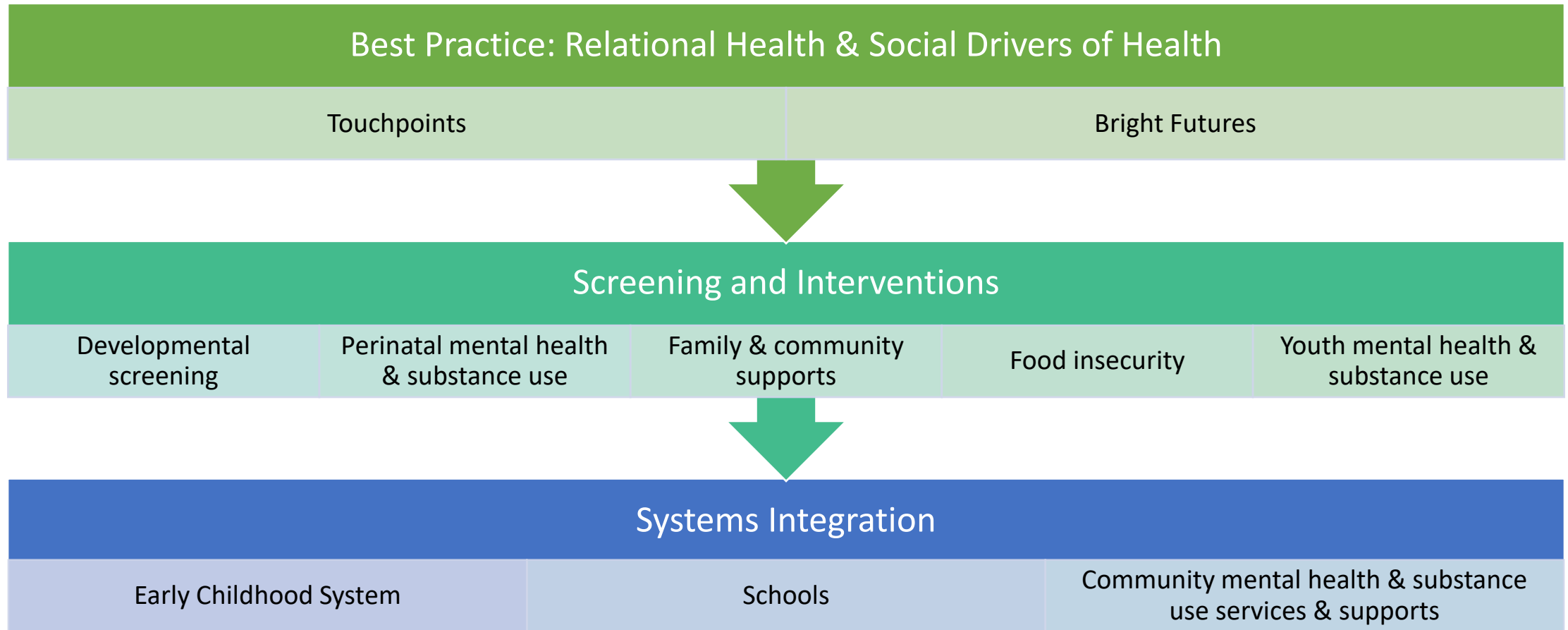
Family

“[DULCE] helps support you and make you the best version of yourself as a mom. Honestly, that's what it did for me.”

Mother

Pediatric Model:

Learning opportunities and quality improvement focused on pediatric best practice, office systems design, and connection to Vermont's services and supports



DULCE: screening across 10 domains

- Employment Security
- Food Security
- Intimate Partner Violence (IPV)
- Financial Supports
- Transportation
- Mental Health/Caregiver Depression
- Housing Stability
- Housing Health & Safety
- Utilities
- Substance Use Disorder

Contacts

Ilisa Stalberg, Division Director, Family & Child Health
Ilisa.Stalberg@vermont.gov

Laura Pentenrieder, DULCE Program Manager
Laura.Pentenrieder@vermont.gov

Kathryn Wolfe, DULCE Program Specialist
Kathryn.Wolfe@vermont.gov