

2019 VERMONT BLUEPRINT FOR HEALTH

LONGER LIVES, BETTER HEALTH: HARMONIZING TO HUMANIZE DATA TO LIVE WELL

Nick Macchione, MS, MPH, FACHE
Deputy Chief Administrative Officer and Director

&

Carrie Hoff
Deputy Director ConnectWellSD
Health and Human Services Agency
County of San Diego, CA

MAY 7, 2019

COUNTY OF SAN DIEGO HEALTH & HUMAN SERVICES AGENCY



- Mission is to make people's lives healthier, safer and self-sufficient by delivering essential services
- Values are integrity, stewardship and commitment
- Provide vital health and social services to San Diego County's 3.4 million residents, and 1.1 million customers.
- Hub and spokes for safety net and large scale population improvements
- From institution-based initiatives to communitywide social movement
- Developed into an **Agency of One**



LIVE WELL SAN DIEGO

San Diegans helping San Diegans Live Well

Live Well San Diego

**A BRIEF
HISTORY**



**LIVE WELL
SAN DIEGO**

A BRIEF HISTORY OF THE HEALTH AND HUMAN SERVICES AGENCY



By 2008, data illuminated that...

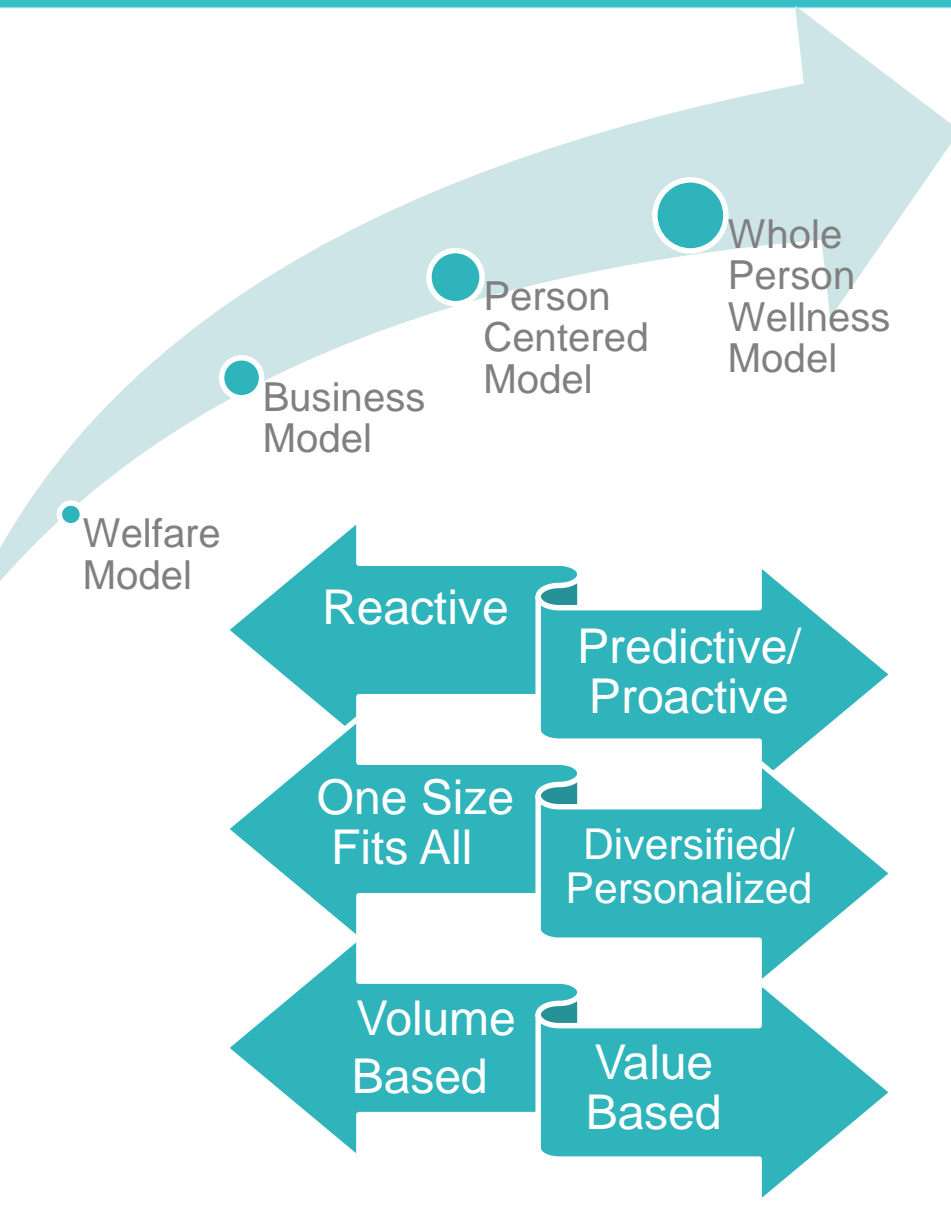
THAT THREE NUMBERS AFFECT US ALL:



SHIFTING MODELS OF PRACTICE



LIVE WELL
SAN DIEGO



2019: ADVANCING WELLNESS HEALTH & HUMAN SERVICES AGENCY



HOW DO WE HELP OVER 3M SAN DIEGO RESIDENTS LEAD HEALTHIER LIVES?

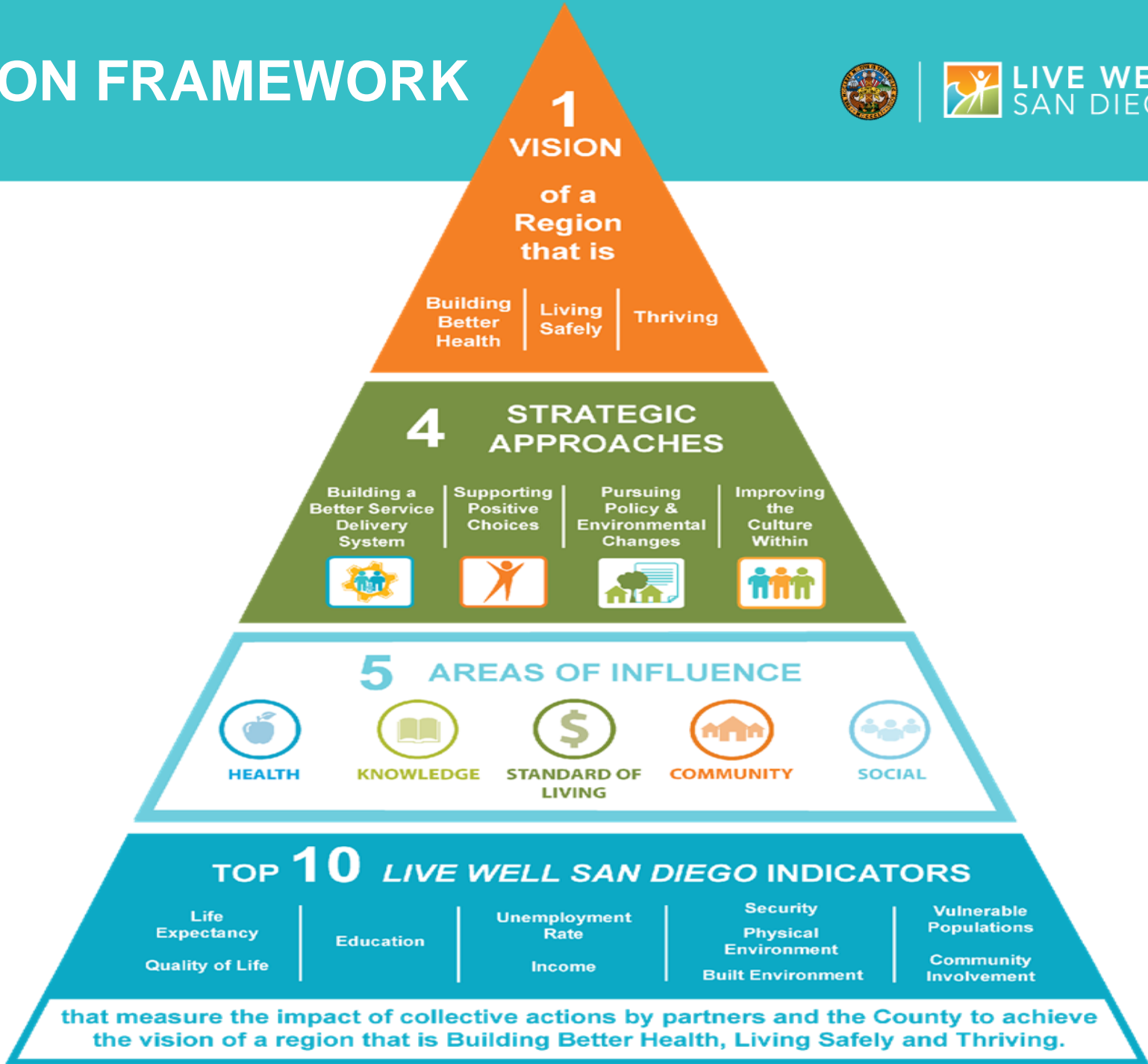
Collaborate. Integrate. Generate.

Seeking solutions was no simple or straightforward task. Complex problems require complex solutions. In order to create sustainable improvements across a diverse and geographically vast region, the Agency sought input representing a range of diverse perspectives.

ACTION FRAMEWORK



LIVE WELL
SAN DIEGO

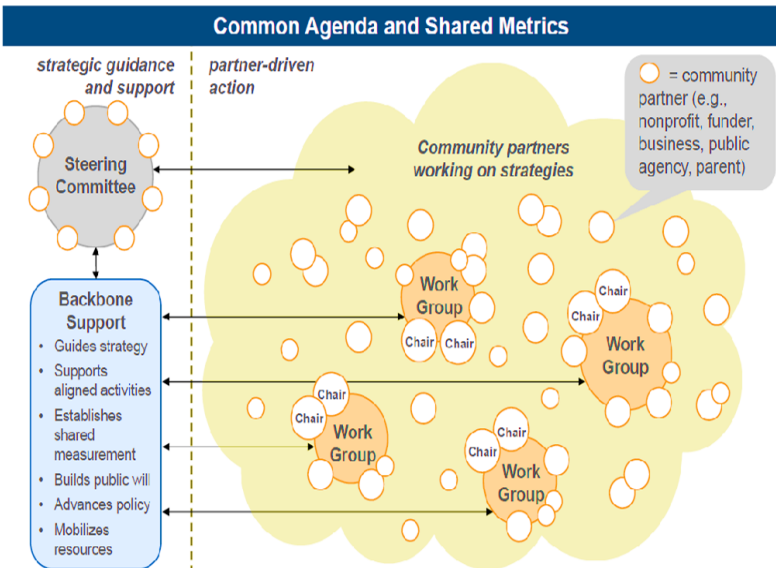


STRUCTURE AND GOVERNANCE & COLLECTIVE IMPACT



The steering committee, working groups & backbone functions all play pivotal roles in Collective Impact

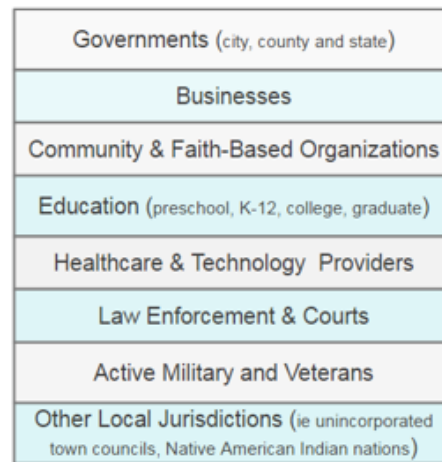
FSG



* Adapted from *Listening to the Stars: The Constellation Model of Collaborative Social Change*, by Icnrya Surman and Mark Surman, 2008.

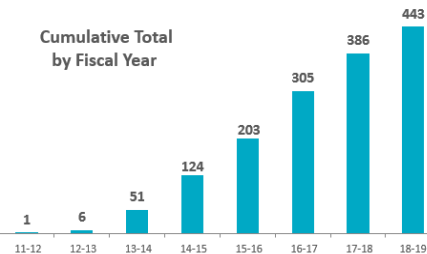
22

Actions We Take Collectively Across Sectors



Results we Seek for Community Impact

Cumulative Total by Fiscal Year

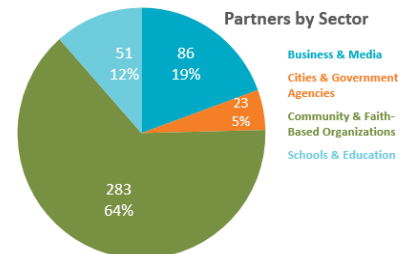


443

Recognized Partners and 2 International Partners as of 5/2/2019

16 Cities and Unincorporated- over 3.1 million Residents

37 School Districts - over 457,000 Students



SAN DIEGO COUNTY'S JOURNEY TO THE GENERATIVE MODEL IN LIVING WELL

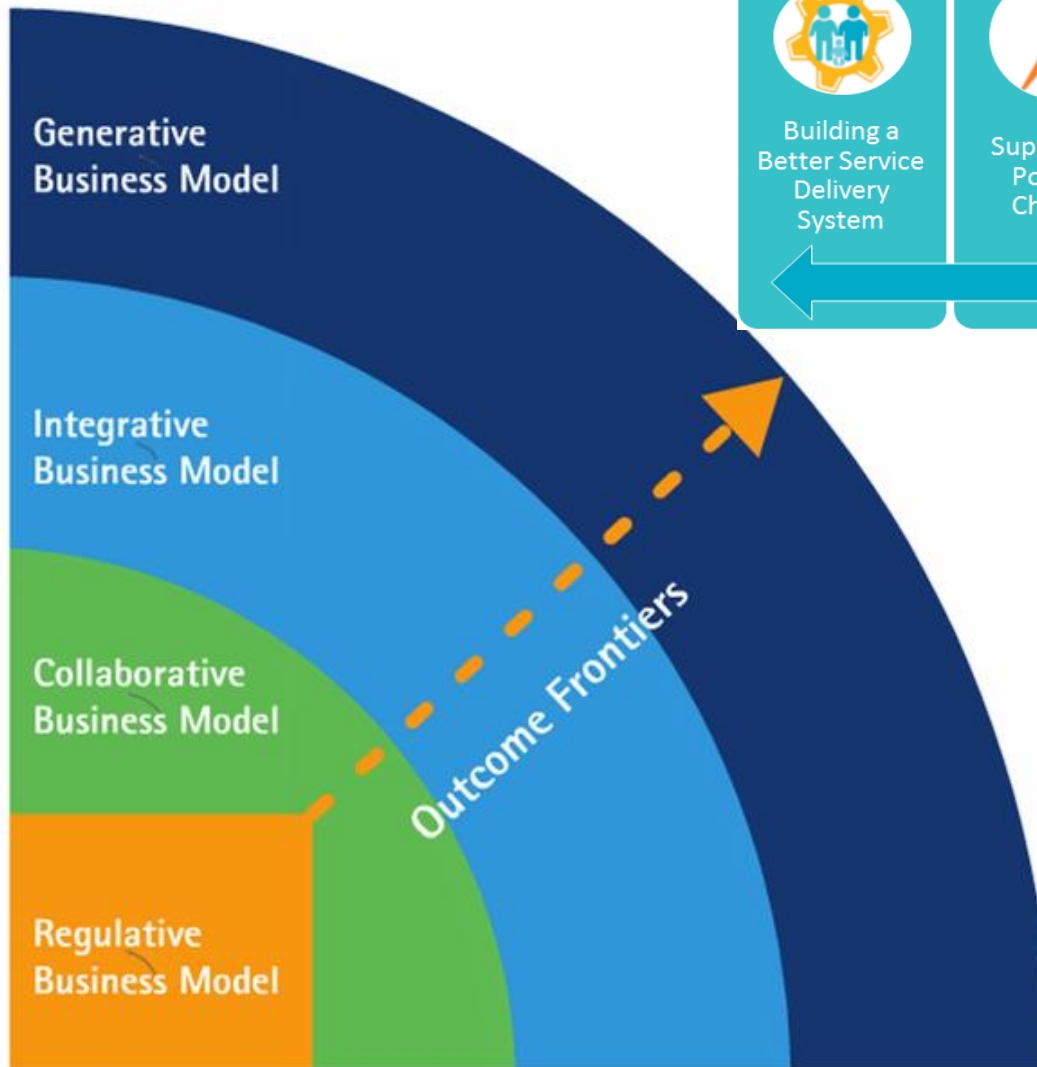


Today
Live Well San Diego
Becomes County
Vision;
443+ Community
Partners and growing

2010-2014
*Live Well San
Diego Initiative*
Implemented

1998
Health and Human
Services Agency was
formed

1996
County's General
Management System
Introduced



Building a
Better Service
Delivery
System



Supporting
Positive
Choices



Pursuing
Policy &
Environmental
Changes



Improving the
Culture Within



ConnectWellSD

*Live Well
San Diego*

IN ACTION



Individuals Have Complex Needs



Olivia Morales
Daughter



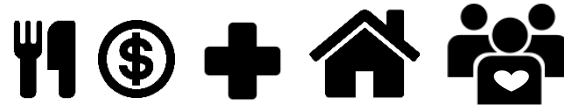
Tania West
Ex-Girlfriend



Mother Carmen



Anthony Morales
Parolee



Juan Garcia
PO



Diane Brookes
Nurse



Victoria Chen
Social Worker

ConnectWellSD

Connect • Collaborate • Empower

Vision

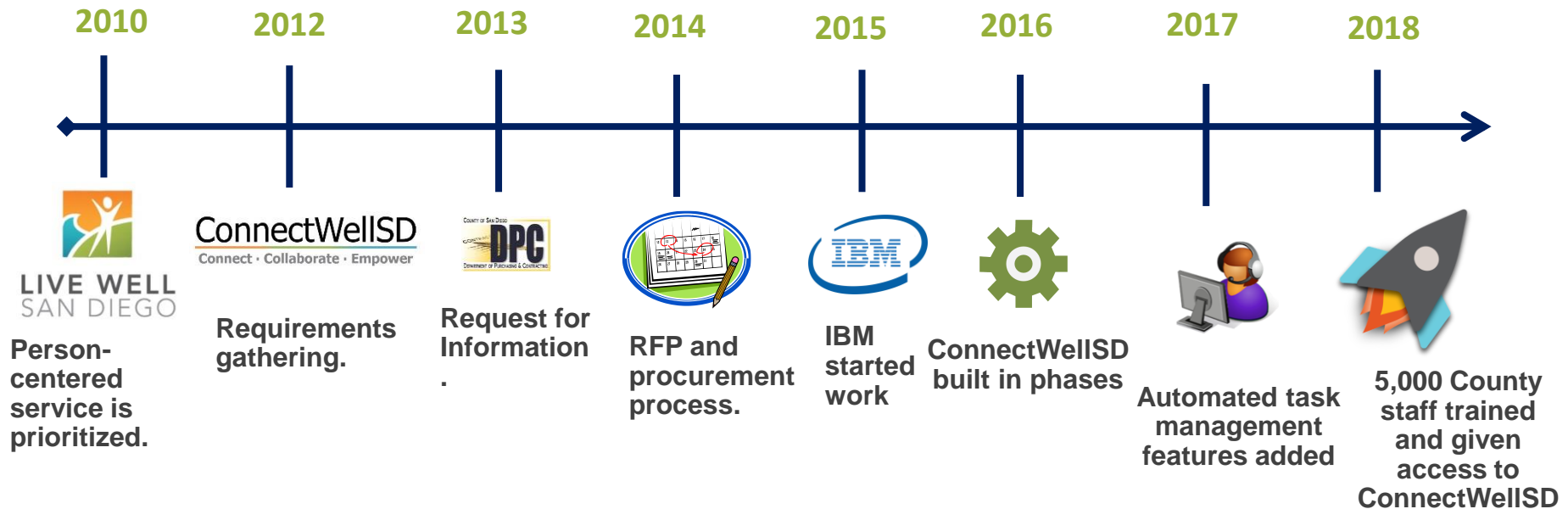
County of San Diego customers have positive experiences and outcomes through technology-enabled, Person-Centered Service.

Mission

Improve service delivery by developing and connecting San Diego County to innovative technology and practices.



From Concept to Reality

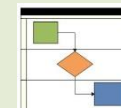


Need for data sharing and increased collaboration articulated.



Privacy regulations Analyzed.

New data governance framework approved.



Work begins to update business processes.

Six Main System Capabilities



Search & View Customer Information



Send/Receive/Manage Electronic Referrals



Run Reports



Receive Alerts & Notifications



Participate on a
Collaborative Service Team



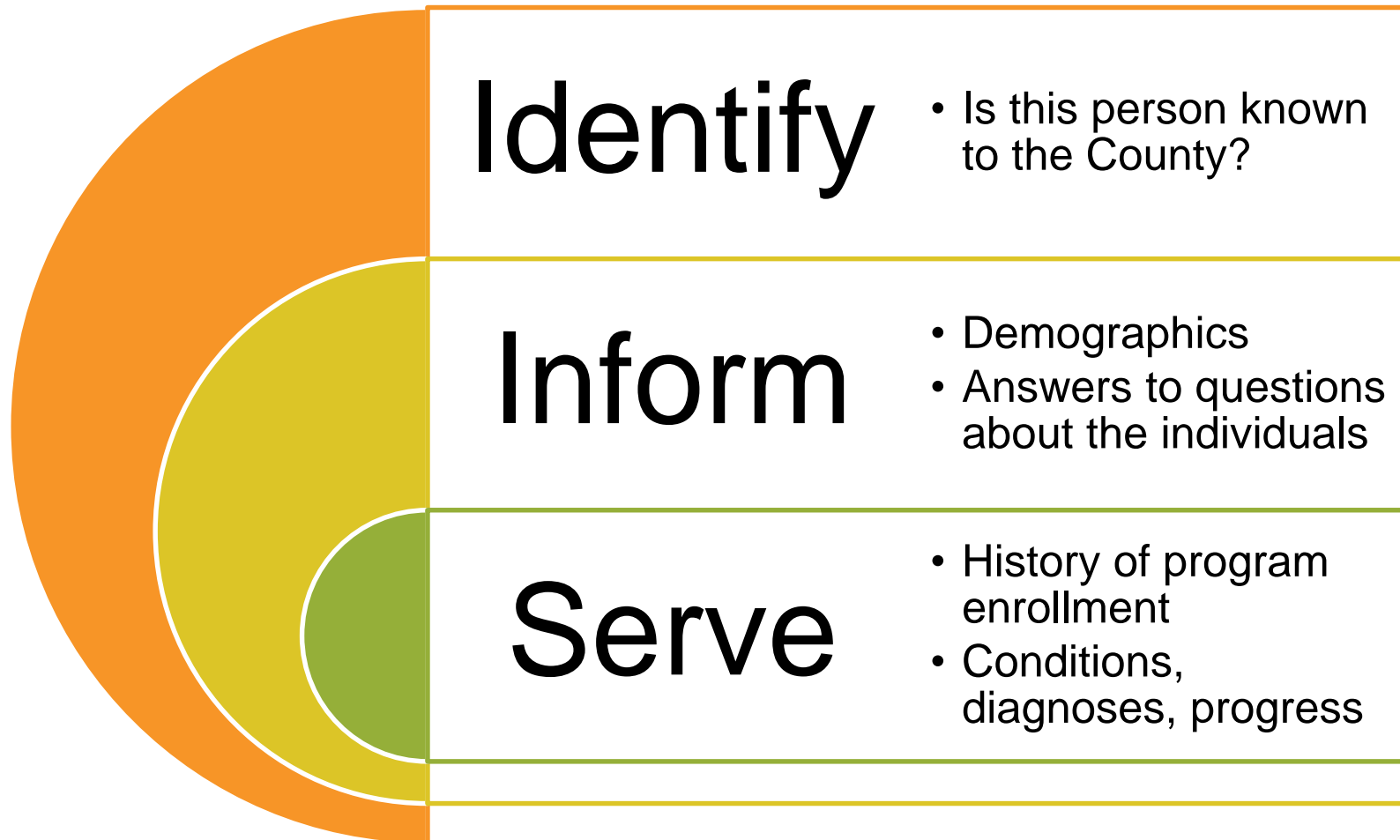
Send/Receive Secure Messages



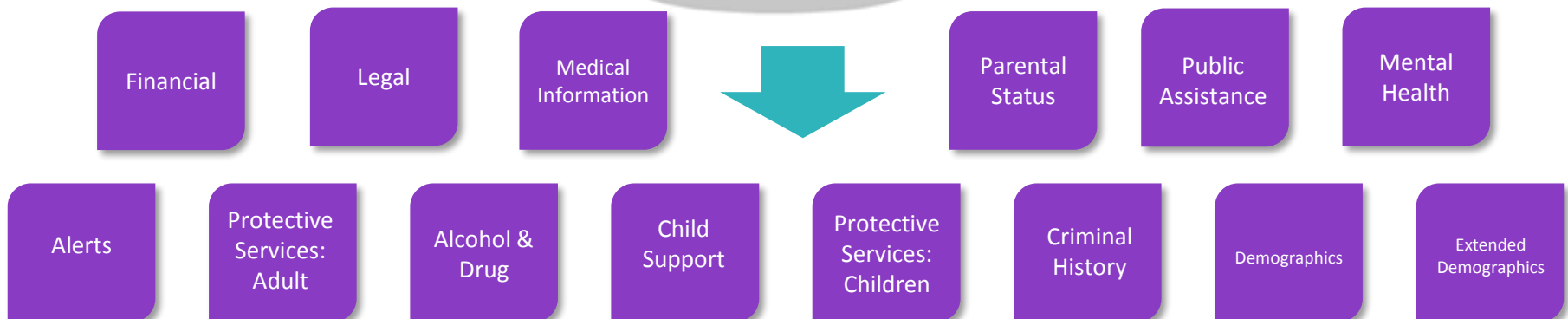
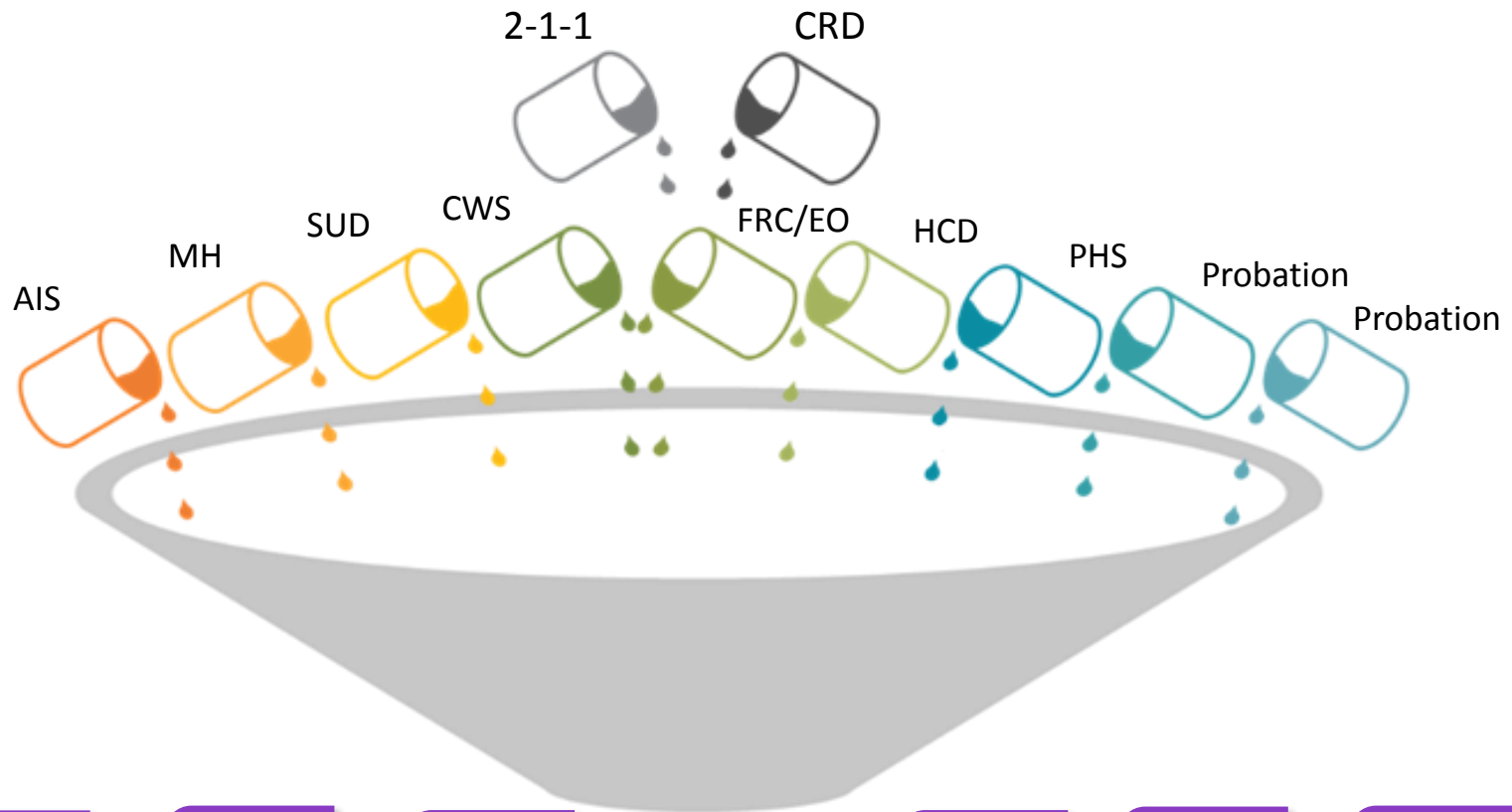
Eligibility Determination:
Work Management



Whole Person
Wellness: OCM



Data in ConnectWellSd





Live Well San Diego

IN ACTION



LIVE WELL
SAN DIEGO

OBESITY IN SCHOOLS



LIVE WELL
SAN DIEGO

Chula Vista Elementary School District

Each Child is an Individual of Great Worth

ABOUT

You are here: [Home](#) » [Less is More: Significant Decrease Seen in Childhood Obesity](#)

LESS IS MORE: SIGNIFICANT DECREASE SEEN IN CHILDHOOD OBESITY

Silver Wing Elementary third-grade students were breaking a sweat. They were jumping rope, executing lunges, and performing "bicycle" abdominal crunches—all in an effort to increase their knowledge and demonstrate their performance of key physical fitness components. The students' cardiovascular endurance, abdominal strength, and even their brains were put through a workout during the physical education session.

The workout reflects the Chula Vista Elementary School District's effort to increase students' physical literacy. The aim is to ensure students have the skills and knowledge to perform a variety of physical activities, putting them on a path to becoming "fit for life." The participation in such workouts is already paying dividends.

A comprehensive six-year initiative to improve student health and wellness across the District has resulted in the most positive trends to date. The results of the District's 2016 measurement of the height and weight of every preschool through sixth grade student were announced at a press conference recently at Silver Wing, co-hosted with the County Health and Human Services Agency. The data collection indicated that, compared to 2010, when the District first collected student Body Mass Index (BMI) data, CVESD recorded:

- a 7.4% increase in students in the normal weight category;
- an 8.0% decrease in students in the overweight category; and
- a 17.1% decrease in students in the obese category.

CVESD's results are being celebrated as strong validation of the importance of community involvement in achieving wellness outcomes. "All eyes are here on Chula

Vista," said Nick Macchione, Director, Health and Human Services Agency, County of San Diego. "At a time when school districts across the nation are showing a growing number of kids who are overweight or obese, Chula Vista is



Q Type Search Term Here

FOLLOW US ON TWITTER

My Tweets

POPULAR LATEST COMMENTS

Proposed Bond Would Fund
at 31 Schools
AUGUST 2, 2012

Students Improved Health
Obesity Rates
MARCH 21, 2013

Fit Teachers Test Their
SEPTEMBER 1, 2012

Board Approves Capital
School Year
FEBRUARY 21, 2013

Board Recognizes
Test Scores
DECEMBER 10, 2012

FOLLOW BLOG

Enter your email address

Body Mass Index (BMI) Surveillance Kit

Developed by the Chula Vista Elementary School District



To support healthy, safe and thriving communities
San Diego County



Coast2CoastRx

Funded in part by San Diego County's CoastalCoastRx. We also accept prescription card programs.

"Tools for Schools" Toolkit



Live Well San Diego:
Partnering with Schools to Reduce
Childhood Obesity and Improve Student Health



HHSA



SAN DIEGO COUNTY
OFFICE OF EDUCATION



April 2015

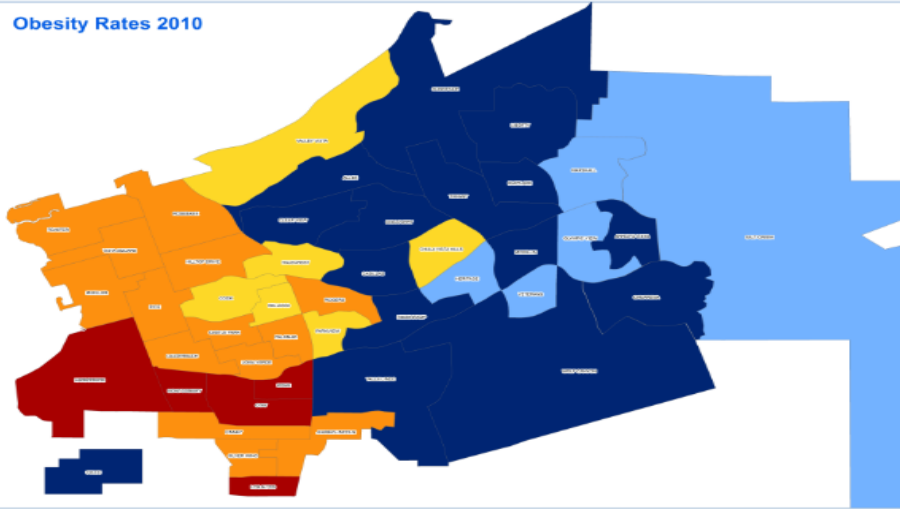
<https://chulavistaesd.wordpress.com/2017/05/10/less-is-more-significant-decrease-seen-in-childhood-obesity/>

RESULTS OVER TIME...

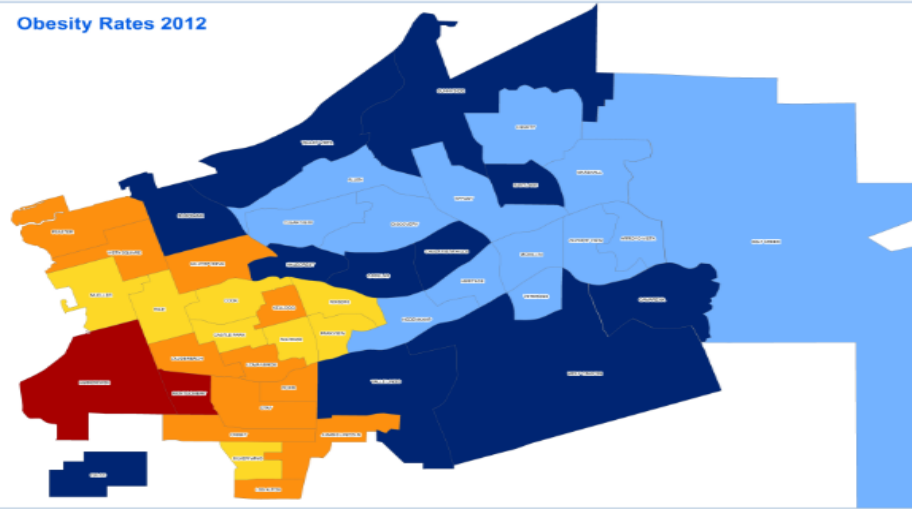


LIVE WELL
SAN DIEGO

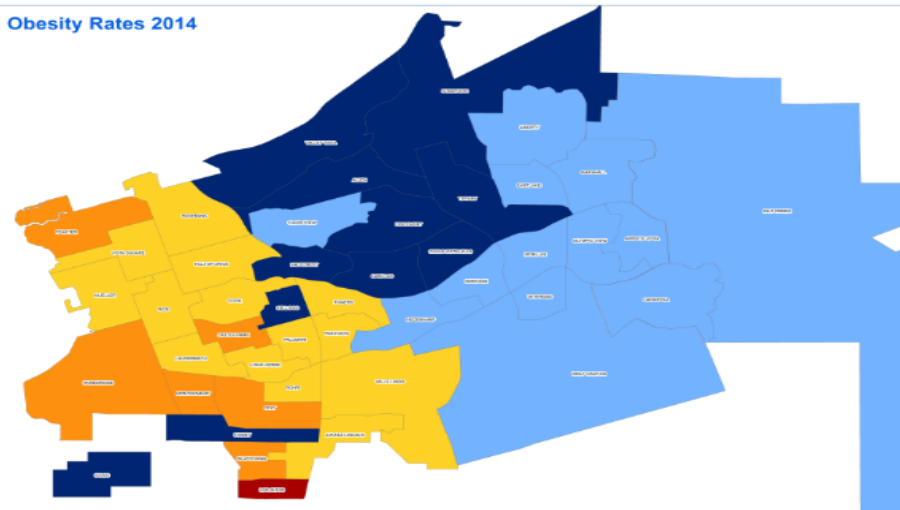
Obesity Rates 2010



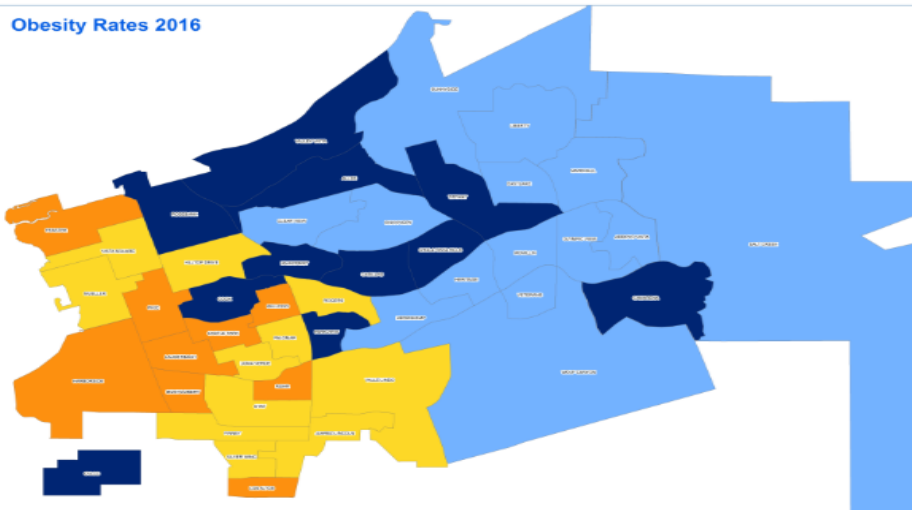
Obesity Rates 2012



Obesity Rates 2014



Obesity Rates 2016



Chula Vista Elementary School District
Student Obesity Rates by School of Attendance (K-6)
Four-Year Comparison

Legend

9.5% - 14.99% 15% - 19.99% 20% - 24.99% 25% - 25.99% 30% +

0 1 2 4 6 8 Miles



Maple Leaf Graphics, Chula Vista Elementary School District 2016, 2012, 2014, 2016

PREVENTING HEART DISEASE AND STROKE



LIVE WELL
SAN DIEGO



Search

HEALTHY, SAFE AND THRIVING COMMUNITIES IN SAN DIEGO COUNTY

ABOUT | NEWS & EVENTS | PARTNERS | LIVE WELL EVERY DAY | COMMUNITY | DATA & RESULTS | CONTACT

HOME | LOVE YOUR HEART

LOVE YOUR HEART

Love Your Heart is an annual event that will take place on February 14, 2017, during which the County of San Diego and its partners will provide free blood pressure screenings to the public at select sites throughout the San Diego region and Mexico. The goal of Love Your Heart is to activate residents to "know their numbers" and take charge of their own heart health.

Love Your Heart is a program under the *Live Well San Diego* vision. To learn more about *Live Well San Diego*, click on the page tabs above.

Find a Screening Site Near You

2017 Report Coming Soon!

2017 Data Report Slides

2017 Partner List

Ama tu Corazón en Español

Contact Us



REGISTER YOUR SITE

COMING SOON! If you have any questions about registration, please contact us at loveyourheartsd@sdcounty.ca.gov.



VOLUNTEER

We need volunteers who can perform blood pressure screenings or assist with logistics and education.



PROMOTE LOVE YOUR HEART

2019 Materials Coming Soon! Spread the word about Love Your Heart Day at your workplace, or among your neighbors and community groups. Check out the Digital Toolkit for general materials.



FIND A SCREENING SITE

COMING SOON! Screening sites are located throughout San Diego County, the U.S. and Mexico. Locate one near you.



LOVE YOUR HEART

FREE BLOOD PRESSURE SCREENINGS HERE!

February 14th

"Join the Heart Health Movement" at locations across the U.S. and Mexico. Celebrate Love Your Heart Day!

Love Your Heart

Sanity by SD County



HEART HEALTH: Collaborating on several fronts to improve health



Be There San Diego

Preventing Heart Attacks & Strokes

POPULATION HEALTH

By Allen Fremont, Alice Y. Kim, Katherine Bailey, Hattie Rees Hanley, Christine Thorne, R. James Dudl, Robert M. Kaplan, Stephen M. Shortell, and Anthony N. DeMaria

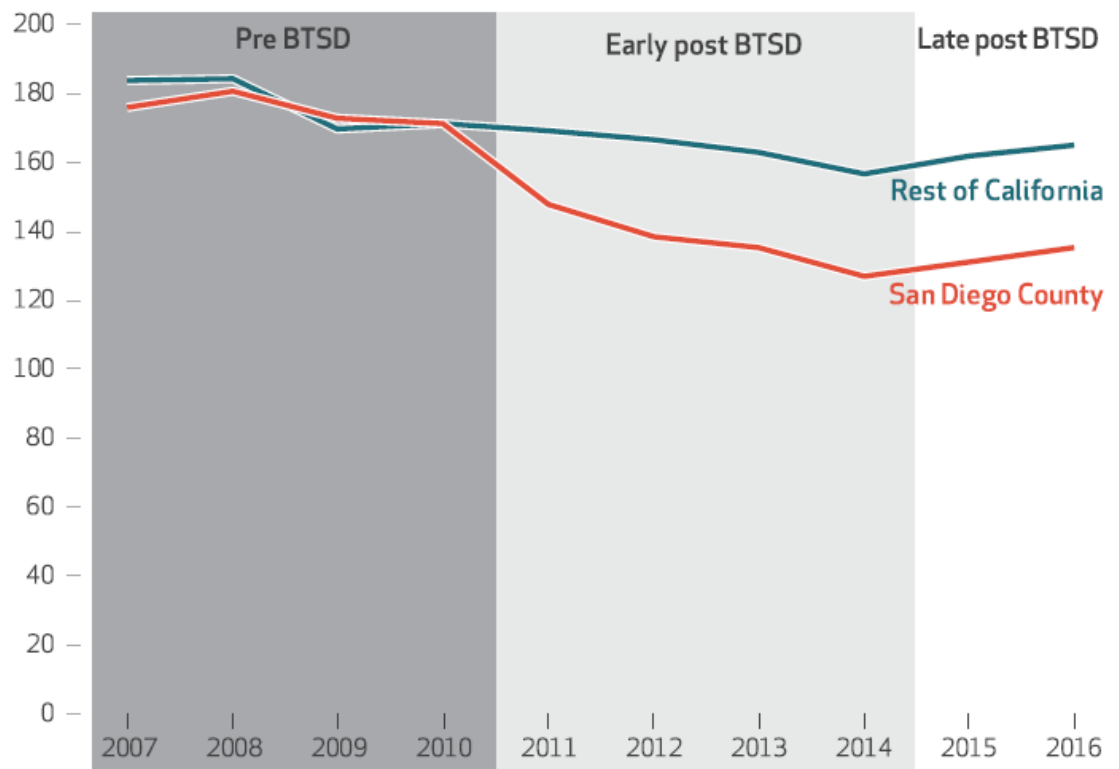
One In Five Fewer Heart Attacks: Impact, Savings, And Sustainability In San Diego County Collaborative

ABSTRACT Before 2011 rates of hospitalization for heart attacks were about the same in San Diego County as they were in the rest of California. In 2011 a multistakeholder population health collaborative consisting of partners at the federal, state, and local levels launched Be There San Diego. The collaborative's goal was to reduce cardiovascular events through the spread of best practices aimed at improving control of hypertension, lipid levels, and blood sugar and through patient and medical community activation. Using hospital discharge data for the period 2007–16, we compared acute myocardial infarction (AMI) hospitalization rates in San Diego County and the rest of the state before and after the demonstration project started. AMI hospitalization rates decreased by 22 percent in San Diego County versus 8 percent in the rest of the state, with an estimated 3,826 AMI hospitalizations avoided and \$86 million in savings in San Diego. Results show that a science-based health collaborative can improve outcomes while lowering costs, and efforts are under way to ensure the collaborative's sustainability.

Health Affairs, doi:
10.1377/hlthaff.2018.0443

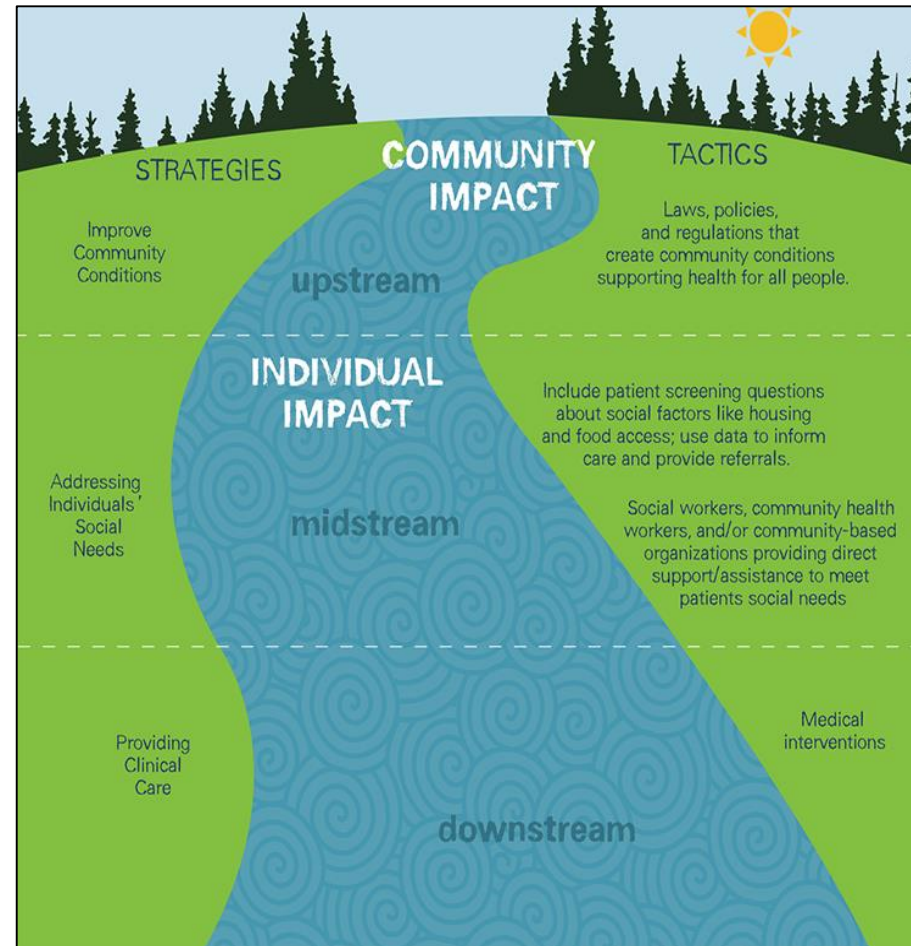
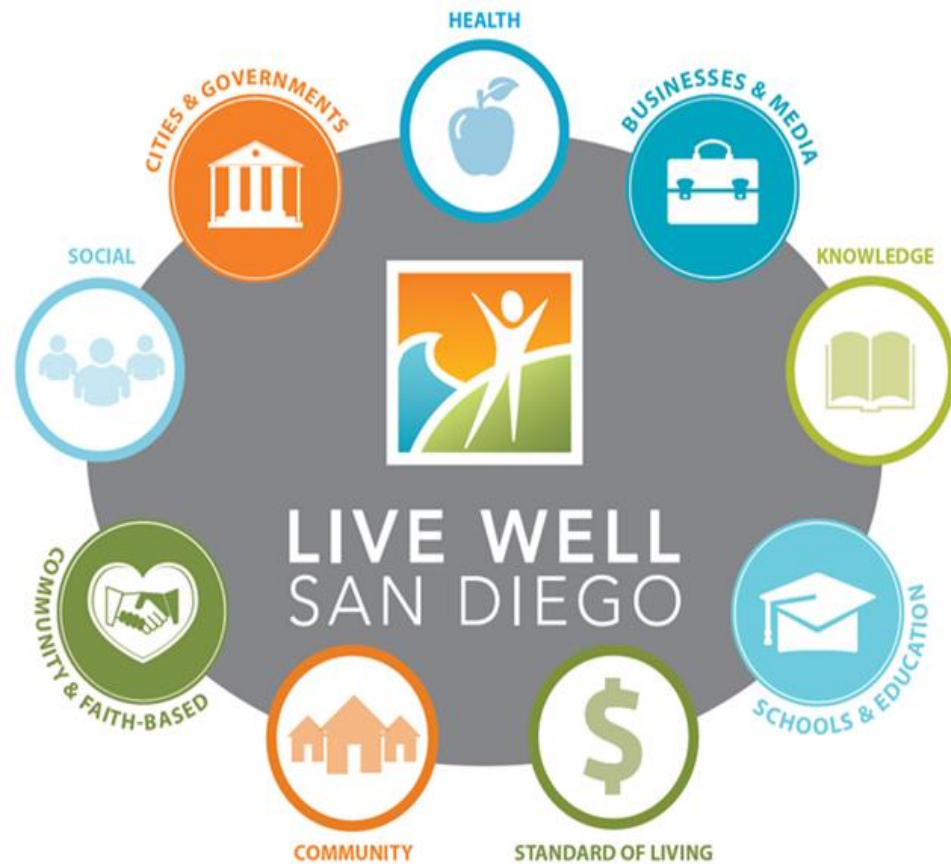
EXHIBIT 2

Age-adjusted hospitalizations for acute myocardial infarction per 100,000 population in San Diego County and the rest of California, 2007–16



SOURCE Authors' analysis of data from the California Office of Statewide Health Planning and Development. **NOTES** Be There San Diego (BTSD) was implemented in 2011. "Pre BTSD" and "post BTSD" refer to before and after that implementation, respectively.

SAN DIEGO ECOSYSTEM TODAY: SOCIAL DETERMINANTS MATTER





WE BELIEVE:

For he who has health has
hope; and he who has
hope, has everything.

OWEN ARTHUR





FOR MORE INFORMATION VISIT:

LIVEWELLSD.ORG

MAY 7, 2019