

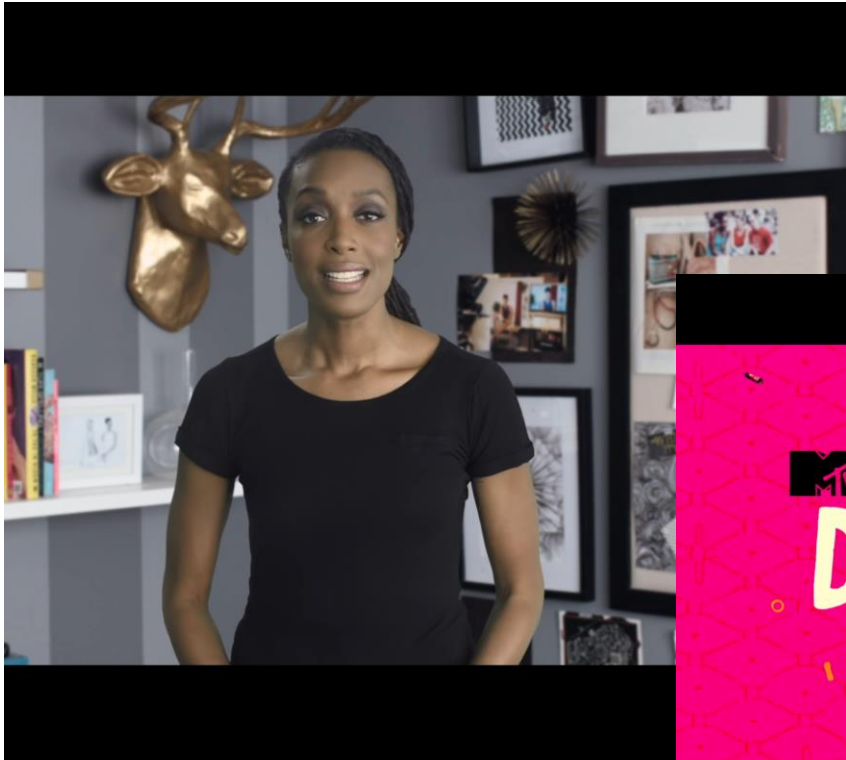


A Standard of Care
to Treat Poverty

**Vermont Blueprint for Health:
Supporting Healthy Communities
And
Addressing Social Determinants of Health**

3/27/2018

**Marcella Wilson, Ph.D.
President & Founder
Transition To Success® LLC**



5 Poverty Myths Debunked ft. The Liberal Redneck - MTV

(Click above for Video)

Treating Environmentally Based, Industry-Accepted Medical Conditions *

Environmental Exposures	Symptoms	Diagnosis	Standard of Care	Billable
Lead ingestion	Irritability, high blood pressure, long-term neurological damage	Lead poisoning	Required	✓
Asbestos	Trouble breathing, nausea, vomiting	Cancer/ Mesothelioma	Required	✓
Mosquito bites	Fever, rash, joint pain, conjunctivitis, muscle pain, headache	Zika, West Nile, yellow fever, and malaria viruses	Required	✓
Limited access to fresh fruits, vegetables, and exercise	Increased thirst, blurred vision	Type II diabetes Obesity	Required	✓
Cigarette smoking and second-hand exposure	Wheezing, increased risk of cancer, asthma, COPD	Nicotine addiction	Required	✓
Accidents	Broken bones, closed head injuries	Trauma	Required	✓
Pollution	Difficulty breathing, decrease in lung function, wheezing	Asthma/COPD	Required	✓
Social Determinants of Health Food insecurity, high crime rates, inadequate/unaffordable housing, lack of access to basic needs/resources, limited access to quality healthcare, poorly performing schools, racism, and unemployment, transportation	Increased rates of diabetes and blood pressure, infant and maternal mortality, increased depression and mental health disorders, asthma, compromised immune system and brain development, higher death rates	Extreme Poverty (ICD 10 Z59.5) Homelessness (ICD 10 Z59.0) Lack of adequate food or safe drinking water (ICD 10 Z59.4) Low Income (ICD 10 Z59.6)	TTS Screening Assessment Referrals: Behavioral Health, Substance Abuse and Social Determinants	Billable CPT Codes for Medicaid and Medicare

* **Note:** Recognized disease without genetic predisposition

Social Determinants of Health:

The social determinants of health are the conditions in which people are born, grow, live, work and age.

These circumstances are shaped by the distribution of money, power and resources at global, national and local levels.

The social determinants of health are mostly responsible for health inequities - the unfair and avoidable differences in health status seen within and between countries.

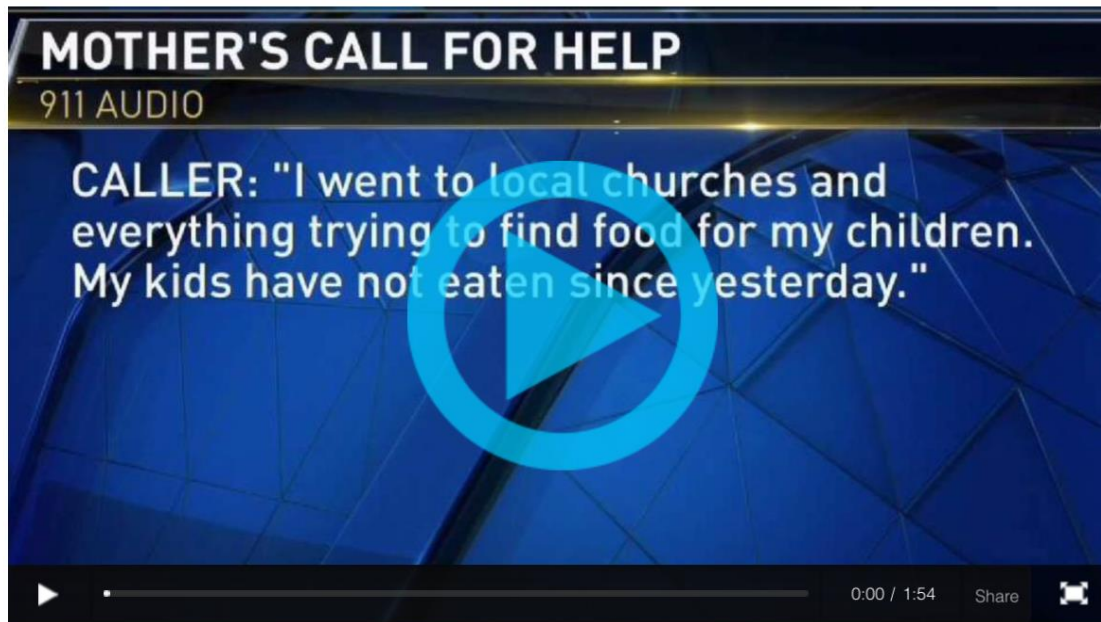
http://www.who.int/social_determinants/sdh_definition/en/

Dispatcher and Police Help Mom After She Calls 911 to Report She Has No Food for Kids

The woman told the dispatcher she had no money, food, phone or options and 911 was the only number she was able to call.

By David Chang and Brandon Hudson

Published at 12:07 AM EST on Jan 30, 2018 | Updated at 1:27 PM EST on Jan 30, 2018



MOTHER'S CALL FOR HELP
911 AUDIO

CALLER: "I went to local churches and everything trying to find food for my children. My kids have not eaten since yesterday."

0:00 / 1:54 Share

A desperate mother called 911 to ask for food for her children. After the call, a dispatcher and Camden County Police lent a huge helping hand and brought her food. NBC10's Brandon Hudson has the story.
(Published Monday, Jan. 29, 2018)

Desperate
Mom Calls
911 Saying
She Has No
Food for Her
Kids!

[NBC Philadelphia - Click Here for the Video Segment](#)

FOOD

HOUSING

INCOME

HEALTHCARE

SAFETY

TRANSPORTATION

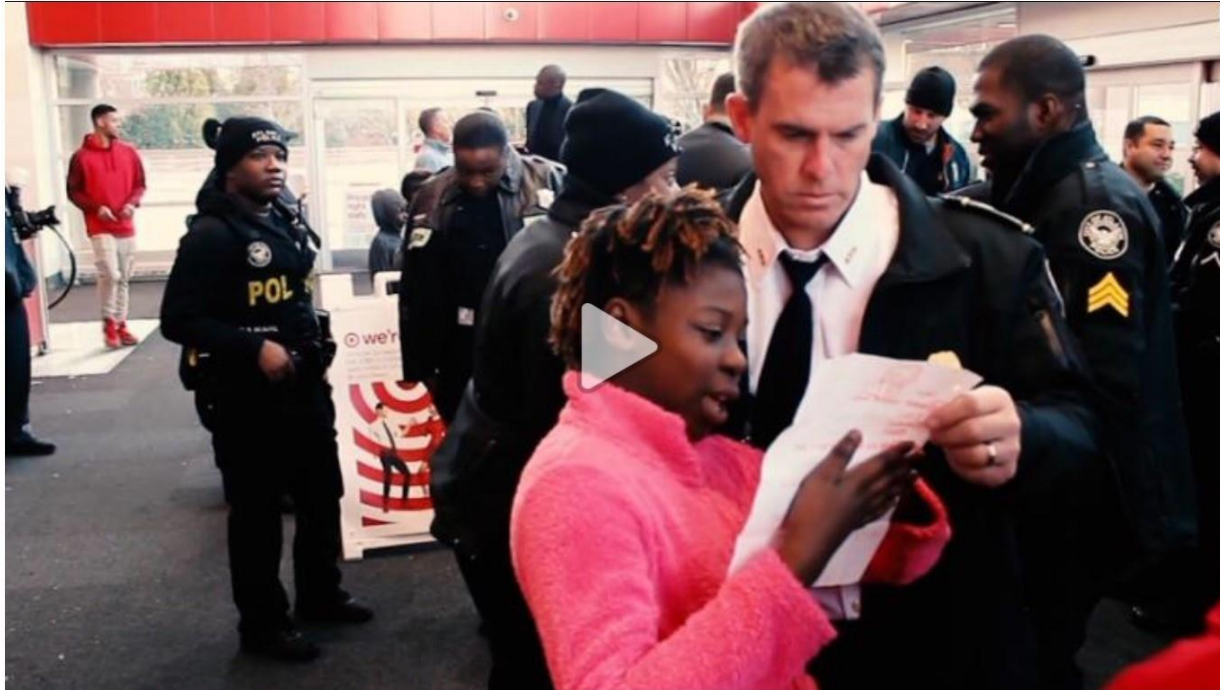
DISABILITIES

LEGAL

EDUCATION

RACISM

BEYOND THE CALL OF
DUTY



Cop finds family in car, changes their life

[New Day](#)

Deputy Police Chief Jeff Glazier met Ebony Rhodes, a homeless single mother of four, while she and her family were living out of a small car. He then helped them find a home.

[CNN's Victor Blackwell](#) reports. [Source: CNN](#)

Our Responsibilities

- Intolerance of Intolerance
- Integrate Screening / Assessment & Treatment Protocols for:
 - Social Determinants of Health
 - Behavioral Health
 - Substance Abuse
- Champion Social Change in:
Practice – Organizations – Community

American Traditions

**“Give Me Your Tired, Your Poor,
Your Huddled Masses Yearning
To Breath Free”**

Emma Lazerus

“Leave No Man Behind”

U.S. Marine Corps Motto



“Like slavery and apartheid, poverty is not natural. It is man-made, and it can be overcome and eradicated by the actions of human beings.”

- Nelson Mandela

Thank you!

“SPIDERS WEBS UNITED CAN TIE UP A LION!”

African Proverb

Marcella Wilson, Ph.D.
MWilson@TTS-LLC.org
www.TransitionToSuccess.org
(313) 580-2672

Check out my book:

Diagnosis: Poverty

A new approach for understanding and
treating an epidemic

www.DiagnosisPoverty.com