

Welcome to the *Blueprint Community Profile*. The Blueprint for Health designs community-led strategies for improving health and wellbeing. The Blueprint supports Patient-Centered Medical Homes, Community Health Teams, Community Collaboratives, the Hub & Spoke program, SASH, Women’s Health Initiative, and Healthier Living workshops.

Blueprint Community Profiles are based primarily on data from Vermont’s all-payer claims database, the Vermont Health Care Uniform Reporting and Evaluation System (VHCURES). Data include all members from commercial, Full Medicaid, and Medicare providers contributing to VHCURES.

This reporting includes the 90,948 Vermont residents represented in VHCURES and groups them by those: (1) attributed to a Blueprint primary care practice, (2) attributed to non-Blueprint primary care, and (3) with no primary care attribution. Members are assigned to an HSA based on the location of their residence.

Blueprint Community Profiles for the adult population cover members ages 18 years and older; pediatric profiles cover members between the ages of 1 and 17 years.

Utilization rates presented in these profiles have been risk adjusted for demographic and health status differences among the reported populations.

Expenditure measures have been omitted since reconciliation and accounting of ACO-related payments were not ready at the time of publication. HSA-level expenditure reporting will be available in the Blueprint for Health Annual Report to the Vermont General Assembly.

In addition to VHCURES, these profiles also use the Vermont Clinical Registry, and the Behavioral Risk Factor Surveillance Study (BRFSS), a telephone survey conducted annually by the Vermont Department of Health.

Rates for HSAs reporting fewer than 30 denominator or 11 numerator members for a measure are not presented in alignment with NCQA HEDIS and CMS guidelines.

Demographics & Health Status

	HSA	Statewide
Distinct Members	3,980	90,948
Average Members	3,770	85,739
Average Age	9.2	9.2
% Female	48.1	48.5
% Medicaid	63.7	65.7
Health Status (CRG)		
% with Selected Chronic Conditions	13.8	15.1
% Healthy	68.1	66.6
% Minor Chronic or Acute	20.1	19.4
% Moderate Chronic	10.2	12.0
% Significant Chronic	1.3	1.7
% Cancer or Catastrophic	0.3	0.3

Table 1: This table provides comparative information on the demographics and health status of the HSA and of the state as a whole. Included measures reflect the types of information used to generate adjusted rates: age, gender, and health status.

Average Members serves as this table’s denominator and adjusts for partial lengths of enrollment during the year. In addition, special attention has been given to adjusting for Medicaid. This includes adjustment for each member’s enrollment in Medicaid, the member’s practice’s percentage of membership that is Medicaid, and the degree to which the member required special Medicaid services that are not found in commercial populations (e.g., day treatment, residential treatment, case management, school-based services, and transportation).

The % with Selected Chronic Conditions measure indicates the proportion of members identified through the claims data as having one or more of eight selected chronic conditions: asthma, chronic obstructive pulmonary disease, congestive heart failure, coronary heart disease, hypertension, diabetes, depression, and attention deficit disorder.

The Health Status (CRG) measure aggregates 3M™ Clinical Risk Grouper (CRG) classifications for the year for the purpose of generating adjusted rates. Aggregated risk classification groups include: Healthy, Acute (e.g., ear, nose, throat infection) or Minor Chronic (e.g., minor chronic joint pain), Moderate Chronic (e.g., diabetes), Significant Chronic (e.g., diabetes and CHF), and Cancer (e.g., breast cancer, colorectal cancer) or Catastrophic (e.g., HIV, muscular dystrophy, cystic fibrosis). CRG identification was enhanced using additional diagnostic and pharmacy information for CY2018 reporting, resulting in fewer healthy members and more members with chronic and other conditions.

Table 2. Demographic & Health Status Indicators by Primary Care Attribution Group

		Community H.S.A.	Statewide
Distinct Members	Blueprint primary care practice attributed	3,575	67,180
	Non-Blueprint primary care attributed	224	18,526
	No primary care attribution	181	5,242
	Combined Population	3,980	90,948
Average Members	Blueprint primary care practice attributed	3,436	64,338
	Non-Blueprint primary care attributed	209	17,538
	No primary care attribution	125	3,862
	Combined Population	3,770	85,739
Average Age	Blueprint primary care practice attributed	9.1	9.1
	Non-Blueprint primary care attributed	10.0	9.4
	No primary care attribution	9.8	9.9
	Combined Population	9.2	9.2
% Female	Blueprint primary care practice attributed	47.9	49.0
	Non-Blueprint primary care attributed	47.8	47.3
	No primary care attribution	51.9	47.4
	Combined Population	48.1	48.5
% Medicaid	Blueprint primary care practice attributed	64.7	67.3
	Non-Blueprint primary care attributed	52.2	61.1
	No primary care attribution	58.6	61.3
	Combined Population	63.7	65.7

Table 2. Demographic & Health Status Indicators by Primary Care Attribution Group, Continued

		Community H.S.A.	Statewide
% with Selected Chronic Conditions	Blueprint primary care practice attributed	14.6	16.4
	Non-Blueprint primary care attributed	8.9	13.8
	No primary care attribution	5.0	3.0
	Combined Population	13.8	15.1
% Healthy	Blueprint primary care practice attributed	66.9	64.4
	Non-Blueprint primary care attributed	72.3	68.0
	No primary care attribution	86.2	89.0
	Combined Population	68.1	66.6
% Minor Chronic or Acute	Blueprint primary care practice attributed	20.8	20.8
	Non-Blueprint primary care attributed	18.3	18.4
	No primary care attribution	8.8	6.1
	Combined Population	20.1	19.4
% Moderate Chronic	Blueprint primary care practice attributed	10.6	12.8
	Non-Blueprint primary care attributed	8.5	11.4
	No primary care attribution	4.4	4.3
	Combined Population	10.2	12.0
% Significant Chronic	Blueprint primary care practice attributed	1.4	1.7
	Non-Blueprint primary care attributed	0.9	1.8
	No primary care attribution	0.0	0.4
	Combined Population	1.3	1.7
% Cancer or Catastrophic	Blueprint primary care practice attributed	0.3	0.3
	Non-Blueprint primary care attributed	0.0	0.4
	No primary care attribution	0.6	0.2
	Combined Population	0.3	0.3

Inpatient Discharges

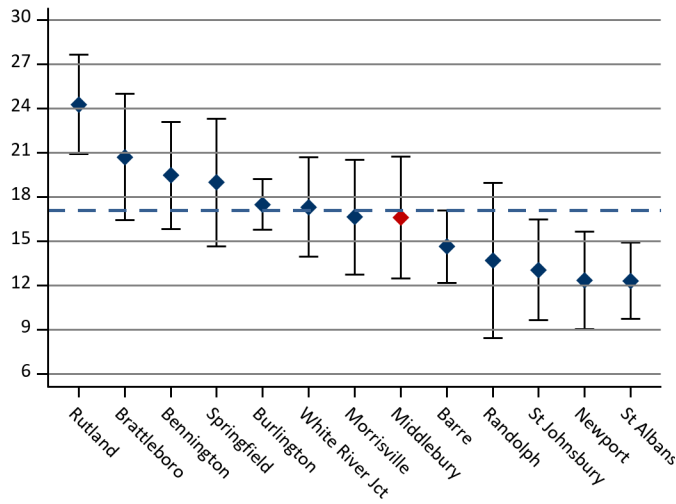


Figure 1: Presents annual risk-adjusted rates, including 95% confidence intervals, of inpatient discharges per 1,000 members. Additional detail measures for inpatient utilization — Inpatient Days, and Preventive Quality Indicators — can be found in Table 4. The blue dashed line indicates the statewide average.

Outpatient ED Visits

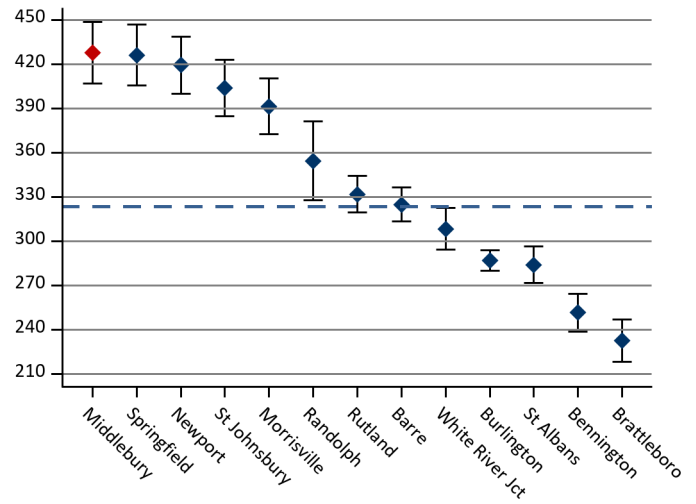


Figure 2: Presents annual risk-adjusted rates, including 95% confidence intervals, of outpatient emergency department (ED) visits per 1,000 members. An additional detail measure — Outpatient Potentially Avoidable ED Visits — can be found in Table 4. The blue dashed line indicates the statewide average.

Advanced Imaging (MRIs, CT Scans)

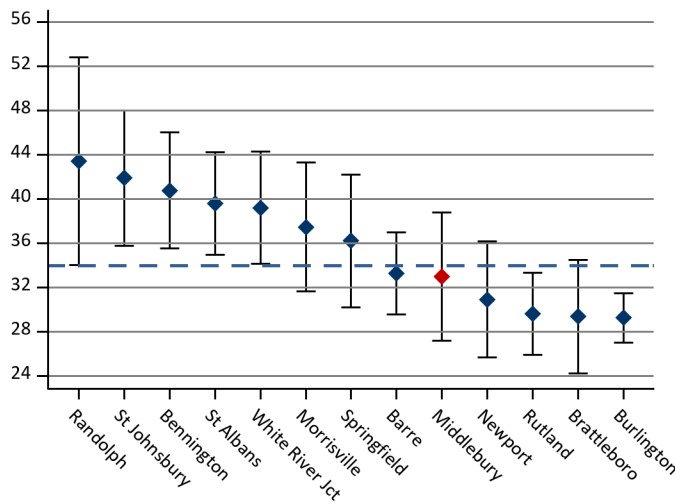


Figure 3: Presents annual risk-adjusted rates, including 95% confidence intervals, of advanced imaging diagnostic tests (i.e., magnetic resonance imagings (MRIs) and computed tomography (CT) scans) per 1,000 members. The blue dashed line indicates the statewide average.

Resource Use Index

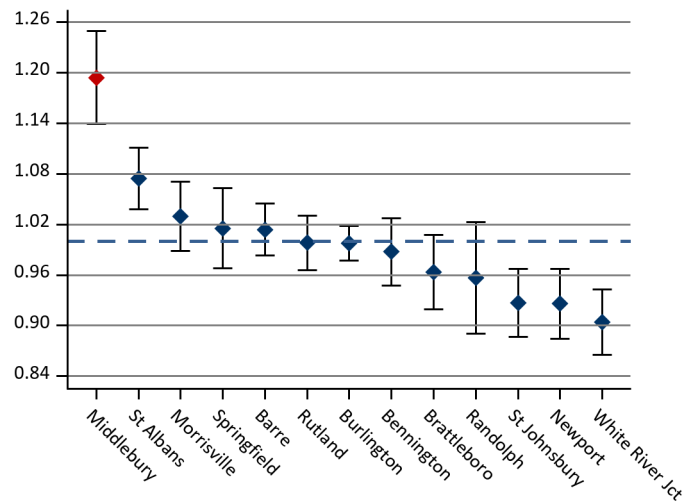


Figure 4: Presents annual total resource use index (RUI), which measures aggregate resource consumption across all components of care. The RUI has been indexed for each HSA relative to the statewide rate of total utilization.

Well-Child Visits

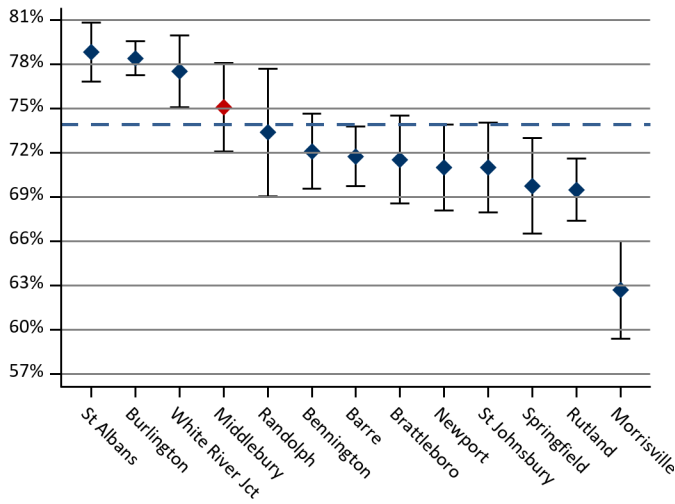


Figure 5: Presents the proportion, including 95% confidence intervals, of members, ages 3-6 years, who received one or more well-child visits during the measurement year. The blue dashed line indicates the statewide average.

Adolescent Well-Care Visits (Core-2)

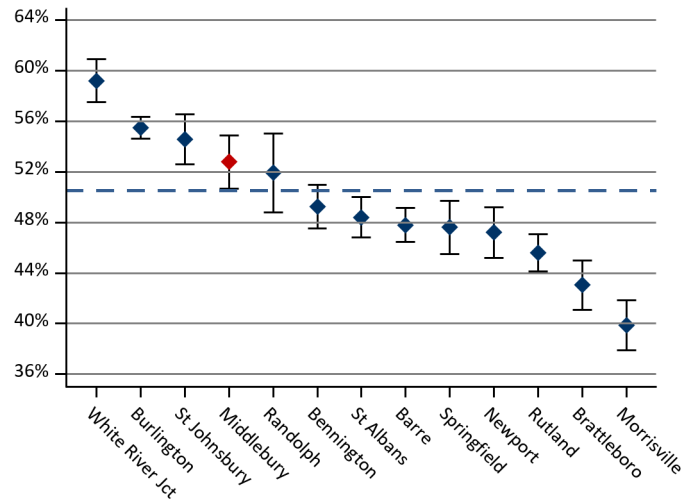


Figure 6: Presents the proportion, including 95% confidence intervals, of members, ages 12-21 years, who received one or more well-care visits with a primary care practitioner or OB/GYN during the measurement year. (Note that, due to the age ranges for this ACO measure, members above the age of 17 years, not typically represented in pediatric profiles, are included in these rates.) The blue dashed line indicates the statewide average.

Developmental Screening in First 3 Years of Life (Core-8, NQF #1448)

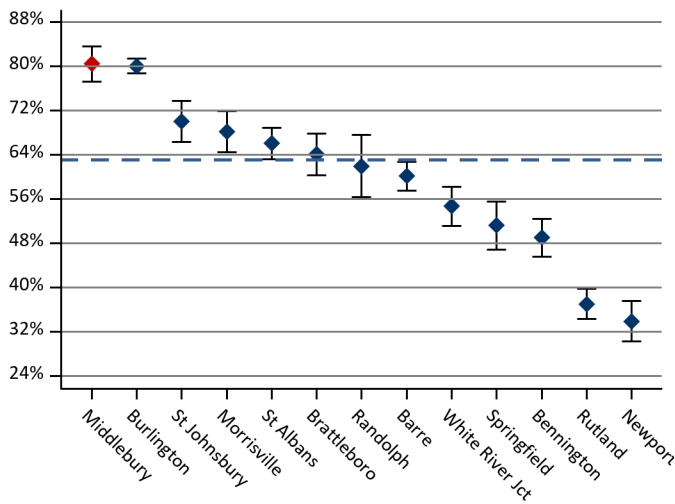


Figure 7: Presents the proportion, including 95% confidence intervals, of continuously enrolled children screened for risk of developmental, behavioral, and social delays using a standardized screening tool in each of the first three years of life. The blue dashed line indicates the statewide average.

Chlamydia Screening in Women (Core-7, NQF #0033)

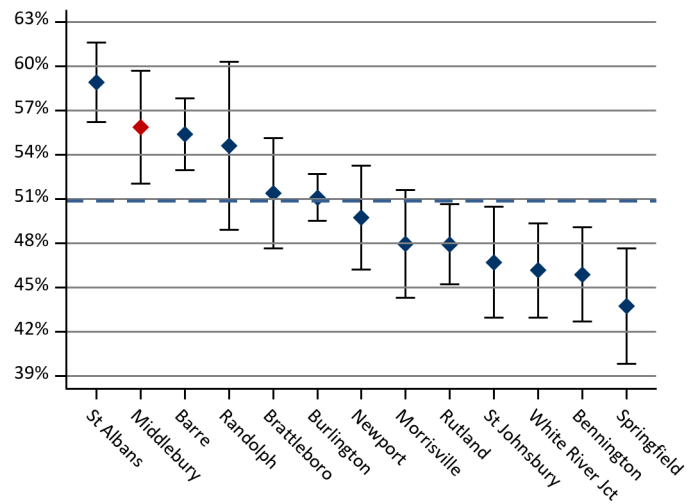


Figure 8: Presents the proportion, including 95% confidence intervals, of continuously enrolled females, ages 16-24 years, who were identified as sexually active and who had at least one test for chlamydia during the measurement year. (Note that, due to the age ranges for this ACO measure, females above the age of 17 years, not typically represented in pediatric profiles, are included in these rates.) The blue dashed line indicates the statewide average.

Appropriate Testing for Pharyngitis (Core-13, NQF #0002)

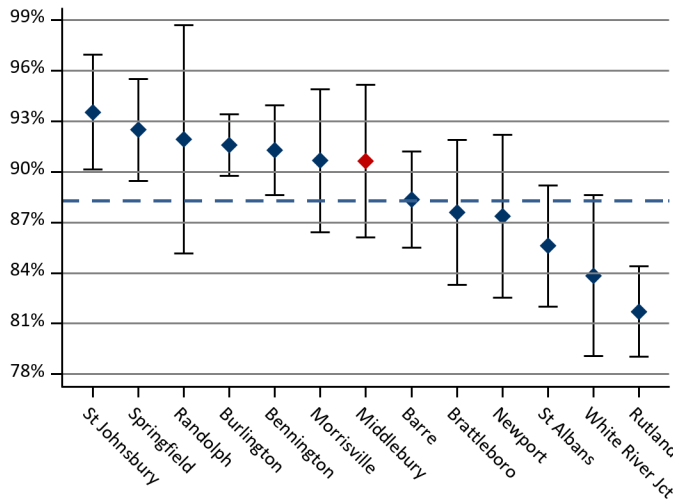


Figure 9: Presents the proportion, including 95% confidence intervals, of children, ages 2-17 years, who were diagnosed with pharyngitis, dispensed an antibiotic, and received a Group A streptococcus (strep) test for the episode. A higher rate represents appropriate testing for children with pharyngitis. The blue dashed line indicates the statewide average.

Appropriate Treatment for Upper Respiratory Infection

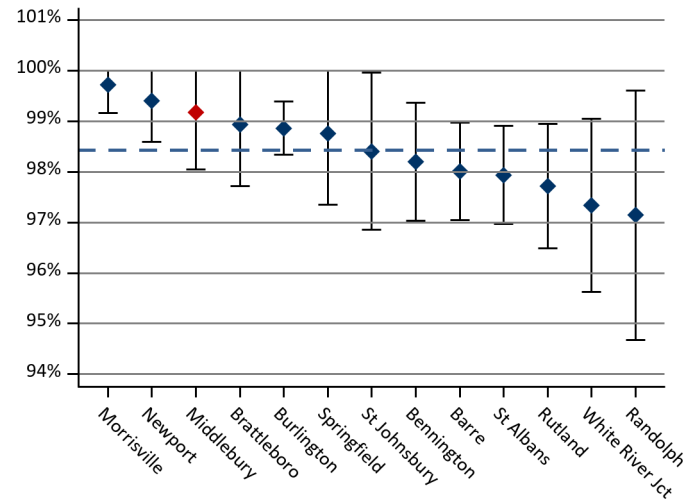


Figure 10: Presents the proportion, including 95% confidence intervals, of children, ages 1-17 years, who were diagnosed with upper respiratory infection (URI) and were not dispensed an antibiotic prescription. A higher rate indicates appropriate treatment of children with URI (i.e., the proportion for whom antibiotics were not prescribed). The blue dashed line indicates the statewide average.

Table 3. Utilization Measures (Adjusted)

Measure	HSA			Statewide		
	Rate per 1,000	95% LCL	95% UCL	Rate per 1,000	95% LCL	95% UCL
Inpatient Discharges	16.6	12.5	20.7	17.1	16.2	18.0
Inpatient Days	134.8	123.1	146.5	134.2	131.7	136.6
Outpatient ED Visits	428.0	407.1	448.8	323.4	319.6	327.2
Outpatient Potentially Avoidable ED Visits	120.6	109.5	131.7	73.2	71.4	75.0
Non-Hospital Outpatient Visits	4,109.8	4,045.1	4,174.5	3,874.7	3,861.5	3,887.9
Primary Care Encounters	3,556.4	3,496.2	3,616.6	3,227.0	3,215.0	3,239.0
Medical Specialist Encounters	279.1	262.2	295.9	300.5	296.8	304.2
Surgical Specialist Encounters	242.8	227.1	258.6	254.9	251.6	258.3
Standard Imaging	181.6	168.0	195.2	214.6	211.5	217.7
Advanced Imaging	33.0	27.2	38.8	34.0	32.7	35.2
Echography	49.1	42.0	56.1	47.7	46.3	49.2
Colonoscopy	1.7	0.4	3.0	1.4	1.2	1.7

Table 4. Effective & Preventive Care Measures

Measure	HSA				Statewide			
	N	Rate %	95% LCL	95% UCL	N	Rate %	95% LCL	95% UCL
Well-Child Visits	791	75%	72%	78%	17,992	74%	73%	75%
Well-Child Visits - Commercial	248	83%	79%	88%	5,483	83%	82%	84%
Well-Child Visits - Medicaid	543	71%	67%	75%	12,509	70%	69%	71%
Adolescent Well-Care Visit (Core-2)	2,158	53%	51%	55%	47,531	51%	50%	51%
Adolescent Well-Care Visit - Commercial	1,025	57%	54%	60%	21,099	54%	53%	54%
Adolescent Well-Care Visit - Medicaid	1,128	48%	46%	51%	26,308	48%	48%	49%
Adolescent Well-Care Visit - Medicare					124	29%	21%	37%
Developmental Screening in First 3 Years of Life (Core-8)	587	80%	77%	84%	12,466	63%	62%	64%
Developmental Screening - Commercial	159	82%	76%	88%	3,666	73%	71%	74%
Developmental Screening - Medicaid	428	80%	76%	83%	8,800	59%	58%	60%
Chlamydia Screening in Women (Core-7)	646	56%	52%	60%	14,250	51%	50%	52%
Chlamydia Screening in Women - Commercial	376	57%	52%	62%	7,610	50%	49%	51%
Chlamydia Screening in Women - Medicaid	267	54%	48%	60%	6,516	52%	51%	54%
Chlamydia Screening in Women - Medicare					124	42%	33%	51%
Appropriate Testing for Pharyngitis (Core-13)	160	91%	86%	95%	4,497	88%	87%	89%
Appropriate Testing for Pharyngitis - Commercial	59	98%	95%	100%	1,392	91%	90%	93%
Appropriate Testing for Pharyngitis - Medicaid	101	86%	79%	93%	3,105	87%	86%	88%
Appropriate Treatment for Upper Respiratory Infection	243	99%	98%	100%	6,497	98%	98%	99%
Appropriate Treatment for Upper Respiratory Infection - Commercial	68	100%	100%	100%	1,801	98%	98%	99%
Appropriate Treatment for Upper Respiratory Infection - Medicaid	175	99%	97%	100%	4,696	98%	98%	99%

Table 5. Key Utilization Measures by Primary Care Attribution Group

Measure		Community H.S.A.			Statewide		
		Risk-Adjusted Rate	95% LCL	95% UCL	Risk-Adjusted Rate	95% LCL	95% UCL
Risk-Adjusted Resource Use Index	Blueprint primary care practice attributed	1.21	1.15	1.27	1.01	1.00	1.02
	Non-Blueprint primary care attributed	1.18	0.86	1.51	1.02	1.00	1.05
	No primary care attribution	0.77	0.51	1.02	0.73	0.69	0.76
	Combined Population	1.19	1.14	1.25	1.00	0.99	1.01
Risk-adjusted Inpatient Utilization	Blueprint primary care practice attributed	16.35	12.08	20.63	16.87	15.87	17.87
	Non-Blueprint primary care attributed	27.92	5.24	50.60	18.38	16.37	20.39
	No primary care attribution	5.04	0.00	17.47	15.34	11.43	19.24
	Combined Population	16.62	12.50	20.73	17.11	16.23	17.99
Risk-adjusted Outpatient ED Utilization	Blueprint primary care practice attributed	435.84	413.77	457.92	330.55	326.11	334.99
	Non-Blueprint primary care attributed	437.58	347.79	527.37	323.90	315.48	332.32
	No primary care attribution	195.84	118.36	273.31	201.78	187.62	215.95
	Combined Population	427.96	407.08	448.84	323.39	319.58	327.20
Potentially Avoidable ED Visits	Blueprint primary care practice attributed	122.43	110.73	134.13	74.37	72.27	76.48
	Non-Blueprint primary care attributed	131.14	81.99	180.30	74.45	70.41	78.49
	No primary care attribution	53.76	13.17	94.35	48.73	41.77	55.70
	Combined Population	120.63	109.54	131.71	73.23	71.42	75.05

Table 6. Total Resource Use Index (RUI) (Adjusted)

Measure	HSA			Statewide		
	Index Ratio	95% LCL	95% UCL	Index Ratio	95% LCL	95% UCL
Total	1.19	1.14	1.25	1.00	0.99	1.01
Inpatient	0.91	0.54	1.27	1.00	0.91	1.09
Outpatient Facility	1.08	0.98	1.18	1.00	0.98	1.02
Professional	1.25	1.20	1.30	1.00	0.99	1.01
Pharmacy	1.17	1.08	1.27	1.00	0.98	1.02

Table 7. ACO and APM Measures Reference Table

VT Measure ID	Medicare Shared Savings Program Measure ID	Measure Name	Nationally Recognized/ Endorsed	Included in HSA Profile?	Measure Description
Core-1		Plan All-Cause Readmissions	NQF #1768, HEDIS measure	Adult	For members 18 years and older, the number of acute inpatient stays during the measurement year that were followed by an acute readmission for any diagnosis within 30 days.
Core-2		Adolescent Well-Care Visit	HEDIS measure	Pediatric	The percentage of members 12-21 years who had at least one comprehensive well-care visit with a PCP or OB/GYN during the measurement year.
Core-3	MSSP-29	Ischemic Vascular Disease (IVD): Complete Lipid Panel (Screening Only)	NQF #0075, NCQA	Adult	The percentage of members 18-75 years who were discharged alive for acute myocardial infarction, coronary artery bypass grafting, or percutaneous coronary intervention in the year prior to the measurement year or who had a diagnosis of Ischemic Vascular Disease during the measurement year and one year prior, who had LDL-C screening.
Core-4		Follow-up after Hospitalization for Mental Illness, 7 Day	NQF #0576, HEDIS measure	Adult	The percentage of discharges for members 6 years and older who were hospitalized for treatment of selected mental illness diagnoses and who had an outpatient visit, an intensive outpatient encounter, or partial hospitalization with a mental health practitioner.
Core-5		Initiation & Engagement of Alcohol and Other Drug Dependence Treatment (a) Initiation, (b) Engagement	NQF #0004, HEDIS measure	Adult	(a) The percentage of adolescent and adult members with a new episode of alcohol or other drug (AOD) dependence who received initiation of AOD treatment within 14 days. (b) The percentage of adolescent and adult members with a new episode of alcohol or other drug (AOD) dependence who initiated treatment and had two additional services with a diagnosis of AOD within 30 days of the initiation visit.
Core-6		Avoidance of Antibiotic Treatment for Adults with Acute Bronchitis	NQF #0058, HEDIS measure	Adult	The percentage of adults 18-64 years with a diagnosis of acute bronchitis who were not dispensed an antibiotic.
Core-7		Chlamydia Screening in Women	NQF #0033, HEDIS measure	Adult and Pediatric	The percentage of women 16-24 years who were identified as sexually active and who had at least one test for chlamydia during the measurement period.
Core-8		Developmental Screening in the First Three Years of Life	NQF #1448	Pediatric	The percentage of children screened for risk of developmental, behavioral, and social delays using a standardized screening tool in the 12 months preceding their first, second, or third birthday.
Core-10	MSSP-9	Ambulatory Sensitive Condition Admissions: Chronic Obstructive Pulmonary Disease or Asthma in Older Adults	NQF, AHRQ (Prevention Quality Indicator (PQI) #5)	Adult	All discharges with an ICD-9-CM principal diagnosis code for COPD or asthma in adults ages 40 years and older, for ACO assigned or aligned Medicare fee-for-service (FFS) beneficiaries with COPD or asthma. This is an observed rate of discharges per 1,000 members.
Core-11	MSSP-20	Mammography / Breast Cancer Screening	NQF #2372, HEDIS measure	Adult	The percentage of women 50-74 years who had a mammogram to screen for breast cancer in the last two years.
Core-12		Rate of Hospitalization for Ambulatory Care Sensitive Conditions: PQI Chronic Composite	NQF, AHRQ (Prevention Quality Indicator (PQI) Chronic Composite)	Adult	Prevention Quality Indicators' (PQI) overall composite per 1,000 population, ages 18 years and older; includes admissions for one of the following conditions: diabetes with short-term complications, diabetes with long-term complications, uncontrolled diabetes without complications, diabetes with lower-extremity amputation, chronic obstructive pulmonary disease, asthma, hypertension, heart failure, angina without a cardiac procedure, dehydration, bacterial pneumonia, or urinary tract infection.

Table 7. ACO and APM Measures Reference Table, Continued

VT Measure ID	Medicare Shared Savings Program Measure ID	Measure Name	Nationally Recognized/ Endorsed	Included in HSA Profile?	Measure Description
Core-13		Appropriate Testing for Children with Pharyngitis	NQF #0002	Pediatric	Percentage of children 2-18 years who were diagnosed with pharyngitis, dispensed an antibiotic and received a group A strep test for the episode.
Core-14		Childhood Immunization Status (Combo 10)	NQF #0038, HEDIS measure	No	The percentage of children 2 years who had each of nine key vaccinations (e.g., MMR, HiB, HepB, etc.).
Core-15		Pediatric Weight Assessment and Counseling	NQF #0024	No	The percentage of members 3-17 years who had an outpatient visit with a PCP or OB/GYN and who had evidence of BMI percentile documentation, counseling for nutrition, and counseling for physical activity.
Core-17	MSSP-27	Diabetes Mellitus: Hemoglobin A1c Poor Control (>9%)	NQF #0059, NCQA	Adult	Percentage of members 18-75 years with diabetes whose HbA1c was in poor control >9%.
Core-18	MSSP-19	Colorectal Cancer Screening	NQF #0034, NCQA HEDIS measure	No	The percentage of members 50-75 years who had appropriate screening for colorectal cancer.
Core-19	MSSP-18	Depression Screening and Follow-Up	NQF #0418, CMS	No	The percentage of members 12 years and older who had negative screening or positive screening for depression completed in the measurement year with an age-appropriate standardized tool. Follow-up for positive screening must be documented same day as screening.
Core-20	MSSP-16	Adult Weight Screening and Follow-Up	NQF #0421, CMS	No	The percentage of members 18 years and older who had BMI calculated during the last visit in the measurement year or within the prior 6 months. In cases where the BMI is abnormal, a follow-up plan must be documented during the visit the BMI was calculated or within the prior 6 months.
Core-21		Access to Care Composite	NCQA	No	NCQA Survey - percentage of members who could get appointments or answers to questions from providers when needed.
Core-22		Communication Composite	NCQA	No	NCQA Survey - percentage of members who felt they received good communication from providers.
Core-23		Shared Decision-Making Composite	NCQA	No	NCQA Survey - percentage of members whose provider helped them make decisions about prescription medications.
Core-24		Self-Management Support Composite	NCQA	No	NCQA Survey - percentage of members whose provider talked to them about specific health goals and barriers.
Core-25		Comprehensiveness Composite	NCQA	No	NCQA Survey - percentage of members whose provider talked to them about depression, stress, and other mental health issues.
Core-26		Office Staff Composite	NCQA	No	NCQA Survey - percentage of members who found the clerks and receptionists at their provider's office to be helpful and courteous.
Core-27		Information Composite	NCQA	No	NCQA Survey - percentage of members who received information from their provider about what to do if care was needed in the off hours and reminders between visits.
Core-28		Coordination of Care Composite	NCQA	No	NCQA Survey - percentage of members whose providers followed-up about test results, seemed informed about specialty care, and talked at each visit about prescription medication.

Table 7. ACO and APM Measures Reference Table, Continued

VT Measure ID	Medicare Shared Savings Program Measure ID	Measure Name	Nationally Recognized/ Endorsed	Included in HSA Profile?	Measure Description
Core-29		Specialist Composite	NCQA	No	NCQA Survey - percentage of members who found it easy to get appointments with specialists and who found that their specialist seemed to know important information about their medical history.
Core-30		Cervical Cancer Screening	NQF #0032, HEDIS measure	Adult	The percentage of women either age 21–64 years who received one or more Papanicolaou (Pap) tests to screen for cervical cancer during the measurement year or the two years prior to the measurement year or age 30–64 years who received one or more Pap tests to screen for cervical cancer during the measurement year or four years prior to the measurement year.
Core-31	MSSP-30	Ischemic Vascular Disease (IVD): Use of Aspirin or Another Antithrombotic	NQF #0068, NCQA	No	Percentage of members 18 years and older with IVD who had documentation of using aspirin or another antithrombotic during the measurement year.
Core-35	MSSP-14	Influenza Vaccination	NQF #0041, AMA-PCPI	Adult	Percentage of members 6 months and older with an outpatient visit between October and March who received an influenza vaccine.
Core-36	MSSP-17	Tobacco Use Assessment and Cessation Intervention	NQF #0028, AMA-PCPI	No	Percentage of members 18 years and older who had a negative tobacco screen or positive tobacco screen with cessation intervention in the two years prior to the measurement year.
Core-38	MSSP-32	Drug Therapy for Lowering LDL Cholesterol	NQF #0074	No	Percentage of members 18 years and older with a diagnosis of CAD and an outpatient visit in the measurement year whose LDL-C <100 mg/dL or LDL-C ≥100 mg/dL and who received a prescription of a statin in the measurement year.
Core-38	MSSP-33	ACE Inhibitor or ARB Therapy for Members with CAD and Diabetes and/or Left Ventricular Systolic Dysfunction (LVSD)	NQF #0066	No	Percentage of members 18 years and older with a diagnosis of CAD and a Left Ventricular Ejection Fraction (LVEF) < 40% or diagnosis of CAD and diabetes who received a prescription of ACE/ARB medication in the measurement year.
Core-39	MSSP-28	Percent of Beneficiaries With Hypertension Whose BP < 140/90 mmHg	NQF #0018, NCQA HEDIS measure	Adult	Percentage of members 18-85 years with hypertension whose BP was in control <140/90 mmHg.
Core-40	MSSP-21	Screening for High Blood Pressure and Follow-Up Plan Documented	Not NQF-endorsed; MSSP	No	Percentage of members 18 years and older seen during the measurement period who were screened for high blood pressure and a recommended follow-up plan is documented based on the current blood pressure reading as indicated.
Core-47	MSSP-13	Falls: Screening for Fall Risk	NQF #0101	No	Percentage of members 65 years and older who had any type of falls screening in the measurement year.
Core-48	MSSP-15	Pneumonia Vaccination (Ever Received)	NQF #0043	Adult	The percentage of members 65 years and older who had documentation of ever receiving a pneumonia vaccine.
Core-53		Diabetes Care Two-Part Composite	NQF #0059 and #0055	Adult	The percentage of members 18-75 years with diabetes who have a valid HbA1c less than or equal to 9% and who received an eye exam for diabetic retinal disease during the measurement year.
	MSSP-1	CG CAHPS: Getting Timely Care, Appointments, and Information	NQF #0005, AHRQ	No	CMS Survey - Getting Timely Care, Appointments, and Information
	MSSP-2	CG CAHPS: How Well Your Doctors Communicate	NQF #0005, AHRQ	No	CMS Survey - How Well Your Doctors Communicate

Table 7. ACO and APM Measures Reference Table, Continued

VT Measure ID	Medicare Shared Savings Program Measure ID	Measure Name	Nationally Recognized/ Endorsed	Included in HSA Profile?	Measure Description
	MSSP-3	CG CAHPS: Patients' Rating of Doctor	NQF #0005, AHRQ	No	CMS Survey - Patients' Rating of Doctor
	MSSP-4	CG CAHPS: Access to Specialists	NQF #0005, AHRQ	No	CMS Survey - Access to Specialists
	MSSP-5	CG CAHPS: Health Promotion and Education	NQF #0005, AHRQ	No	CMS Survey - Health Promotion and Education
	MSSP-6	CG CAHPS: Shared Decision Making	NQF #0005, AHRQ	No	CMS Survey - Shared Decision Making
	MSSP-7	CG CAHPS: Health Status / Functional Status	NQF #0006, AHRQ	No	CMS Survey - Health Status/Functional Status
	MSSP-8	Risk-Standardized, All Condition Readmission	CMS, not submitted to NQF (adapted from NQF #1789)	No	All discharges with an ICD-9-CM principal diagnosis code for COPD or asthma in adults ages 40 years and older, for ACO assigned or aligned Medicare fee-for-service (FFS) beneficiaries with COPD or asthma. This is an observed rate of discharges per 1,000 members.
	MSSP-10	Ambulatory Sensitive Condition Admissions: Congestive Heart Failure	NQF #0277, AHRQ (Prevention Quality Indicator (PQI) #8)	Adult	All discharges with an ICD-9-CM principal diagnosis code for CHF in adults ages 18 years and older, for ACO assigned or aligned Medicare fee-for-service (FFS) beneficiaries with CHF. This is an observed rate of discharges per 1,000 members.
	MSSP-11	Percent of Primary Care Physicians who Successfully Qualify for an EHR Program Incentive Payment	CMS EHR Incentive Program Reporting	No	Percentage of Accountable Care Organization (ACO) primary care physicians (PCPs) who successfully qualify for either a Medicare or Medicaid Electronic Health Record (EHR) Program incentive payment.
	MSSP-12	Medication Reconciliation: Reconciliation After Discharge from an Inpatient Facility	NQF #0554	No	Percentage of members 65 years and older who were discharged from any inpatient facility in the measurement year and had an outpatient visit within 30 days of the discharge who had documentation in the outpatient medical record of reconciliation of discharge medications with current outpatient medications during a visit within 30 days of discharge.
	MSSP-24	Diabetes: Blood Pressure Control		Adult	Percentage of members 18-75 years with diabetes who had blood pressure <140/90 mmHg at most recent visit.
	MSSP-25	Diabetes: Tobacco Non-Use		Adult	Percentage of members 18-75 years with diabetes who were identified as a non-user of tobacco in measurement year.
	MSSP-31	Heart Failure: Beta-Blocker Therapy for Left Ventricular Systolic Dysfunction (LVSD)	NQF #0083	No	Percentage of members 18 years and older with a diagnosis of heart failure who also had LVSD (LVEF < 40%) and who were prescribed beta-blocker therapy.
		Comprehensive Diabetes Care: Eye Exams for Diabetics	NQF #0055, HEDIS measure	Adult	Percentage of members with diabetes 18-75 years who received an eye exam for diabetic retinal disease during the measurement year.
M&E-3		Comprehensive Diabetes Care: Medical Attention for Nephropathy	NQF #0062, HEDIS measure	Adult	Percentage of members with diabetes 18-75 years who received a nephropathy screening test during the measurement year.

Table 7. ACO and APM Measures Reference Table, Continued

VT Measure ID	Medicare Shared Savings Program Measure ID	Measure Name	Nationally Recognized/ Endorsed	Included in HSA Profile?	Measure Description
APM-HD-II		Follow-Up After Discharge From ED for Mental Health	NQF #2605, HEDIS measure	Adult	Percentage of ED visits for members 18 years of age and older with a principal diagnosis of mental illness, who had a follow up visit for mental health within 30 days of the ED visit.
APM-HD-III		Follow-Up After Discharge From ED for AOD	NQF #2605, HEDIS measure	Adult	Percentage of ED visits for members 18 years of age and older with a principal diagnosis of alcohol or other drug (AOD) dependence, who had a follow up visit for AOD within 30 days of the ED visit.
APM-P-III, ACO-18		Screening for Clinical Depression	NQF #0418	Adult	Percentage of members ages 18 years and older that were screened for clinical depression on the date of encounter using an age-appropriate standardized depression screening tool.
APM-P-IV, ACO-17		Tobacco Use Screening	NQF #0028	Adult	Percentage of members ages 18 years and older that were screened for tobacco use one or more times within a two-year lookback period and that received cessation counseling intervention.
APM-P-V		Medication Management for People With Asthma	NQF #1799, HEDIS measure	Adult	The percentage of members age 18-64 during the measurement year who were identified as having persistent asthma and were dispensed appropriate medications that they remained on during the treatment period. Two rates are reported. 1. The percentage of patients who remained on an asthma controller medication for at least 50% of their treatment period. 2. The percentage of patients who remained on an asthma controller medication for at least 75% of their treatment period.

Patient Experience Survey: Access to Care Composite CY2018

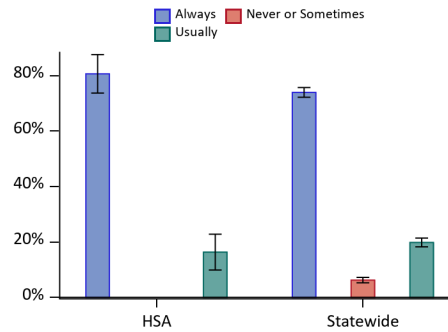


Figure 11: Presents the composite proportion, including the 95% confidence interval, of the given response to the questions associated with Access to Care on the behalf of children less than 18 years. The composite proportion is given by the average of the corresponding proportions of the associated questions.

Table 8. Patient Experience Survey: Access to Care Questions

Question & Answer		HSA			Statewide		
		N	%	Error (+/-)	N	%	Error (+/-)
In the last 6 months, when you made an appointment for a check-up or routine care with this provider, how often did you get an appointment as soon as your child needed?	Always	61	77%	11%	1,192	70%	3%
	Usually	61	21%	11%	1,192	24%	2%
	Never or Sometimes				1,192	7%	1%
In the last 6 months, when you contacted this provider's office to get an appointment for care you needed right away, how often did you get an appointment as soon as your child needed?	Always	38	82%	14%	654	77%	3%
	Usually				654	17%	3%
	Never or Sometimes				654	6%	2%
In the last 6 months, when you contacted this provider's office during regular office hours, how often did you get an answer to your medical question that same day?	Always	42	83%	12%	746	75%	3%
	Usually				746	19%	3%
	Never or Sometimes				746	6%	2%

Patient Experience Survey: Communication Composite CY2018

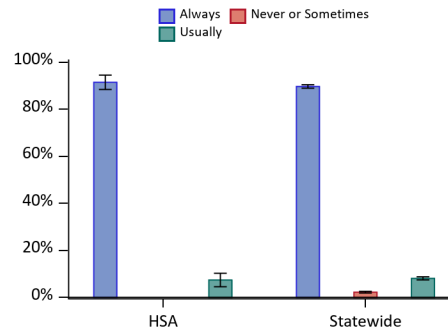


Figure 12: Presents the composite proportion, including the 95% confidence interval, of the given response to the questions associated with Communication on the behalf of children less than 18 years. The composite proportion is given by the average of the corresponding proportions of the associated questions.

Table 9. Patient Experience Survey: Communication Questions

Question & Answer		HSA			Statewide		
		N	%	Error (+/-)	N	%	Error (+/-)
In the last 6 months, how often did this provider show respect for what you had to say?	Always	88	92%	6%	1,681	91%	1%
	Usually				1,681	6%	1%
	Never or Sometimes				1,681	2%	1%
In the last 6 months, how often did this provider explain things in a way that was easy for your child to understand?	Always	88	91%	7%	1,682	90%	1%
	Usually				1,682	8%	1%
	Never or Sometimes				1,682	2%	1%
In the last 6 months, how often did this provider listen carefully to your child?	Always	88	92%	6%	1,677	89%	2%
	Usually				1,677	8%	1%
	Never or Sometimes				1,677	3%	1%
In the last 6 months, how often did this provider spend enough time with your child?	Always	88	91%	7%	1,675	88%	2%
	Usually				1,675	10%	1%
	Never or Sometimes				1,675	2%	1%

Patient Experience Survey: Coordinated Care Composite CY2018

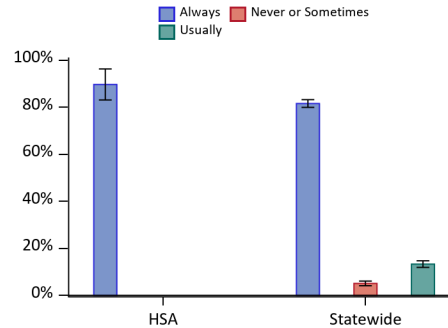


Figure 13: Presents the composite proportion, including the 95% confidence interval, of the given response to the questions associated with Coordinated Care on the behalf of children less than 18 years. The composite proportion is given by the average of the corresponding proportions of the associated questions.

Table 10. Patient Experience Survey: Coordinated Care Questions

Question & Answer		HSA			Statewide		
		N	%	Error (+/-)	N	%	Error (+/-)
In the last 6 months, when this provider ordered a blood test, x-ray, or other test for your child, how often did someone from this provider's office follow up to give you those results?	Always				279	83%	5%
	Usually				279	11%	4%
	Never or Sometimes				279	6%	3%
In the last 6 months, how often did this provider seem to know the important information about your child's medical history?	Always	87	89%	7%	1,664	80%	2%
	Usually				1,664	15%	2%
	Never or Sometimes				1,664	4%	1%

Patient Experience Survey: Office Staff Composite CY2018

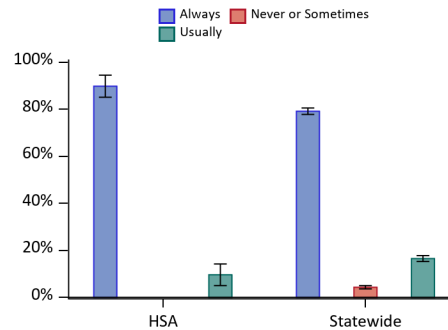


Figure 14: Presents the composite proportion, including the 95% confidence interval, of the given response to the questions associated with Office Staff on the behalf of children less than 18 years. The composite proportion is given by the average of the corresponding proportions of the associated questions.

Table 11. Patient Experience Survey: Office Staff Questions

Question & Answer		HSA			Statewide		
		N	%	Error (+/-)	N	%	Error (+/-)
In the last 6 months, how often did clerks and receptionists at this provider's office treat you with courtesy and respect?	Always	87	94%	5%	1,684	85%	2%
	Usually				1,684	12%	2%
	Never or Sometimes				1,684	3%	1%
In the last 6 months, how often were clerks and receptionists at this provider's office as helpful as you thought they should be?	Always	89	85%	8%	1,679	73%	2%
	Usually	89	13%	8%	1,679	21%	2%
	Never or Sometimes				1,679	5%	1%

Patient Experience Survey: Specialist Composite CY2018

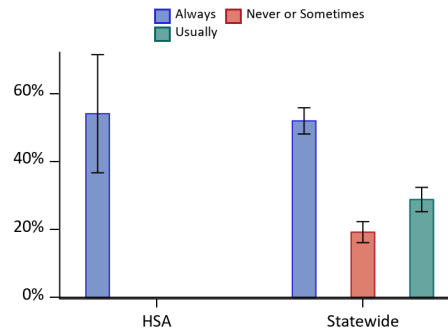


Figure 15: Presents the composite proportion, including the 95% confidence interval, of the given response to the questions associated with Specialist on the behalf of children less than 18 years. The composite proportion is given by the average of the corresponding proportions of the associated questions.

Table 12. Patient Experience Survey: Specialist Questions

Question & Answer		HSA			Statewide		
		N	%	Error (+/-)	N	%	Error (+/-)
In the last 6 months, how often was it easy to get appointments with specialists for your child?	Always				305	42%	6%
	Usually				305	32%	5%
	Never or Sometimes				305	27%	5%
In the last 6 months, how often did the specialist you saw most seem to know the important information about your child's medical history?	Always				337	62%	5%
	Usually				337	26%	5%
	Never or Sometimes				337	12%	4%

Patient Experience Survey: Information Composite CY2018

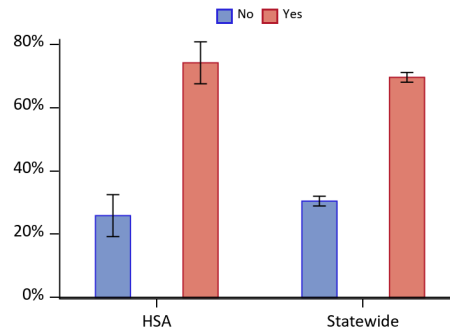


Figure 16: Presents the composite proportion, including the 95% confidence interval, of the given response to the questions associated with information on the behalf of children less than 18 years. The composite proportion is given by the average of the corresponding proportions of the associated questions.

Table 13. Patient Experience Survey: Information Questions

Question & Answer		HSA			Statewide		
		N	%	Error (+/-)	N	%	Error (+/-)
Did this provider's office give you information about what to do if your child needed care during evenings, weekends, or holidays?	Yes	89	81%	9%	1,679	79%	2%
	No	89	19%	9%	1,679	21%	2%
Some offices remind patients between visits about tests, treatment or appointments. In the last 6 months, did you get any reminders about your child's care from this provider's office between visits?	Yes	89	67%	10%	1,669	60%	2%
	No	89	33%	10%	1,669	40%	2%

Table 14. HSA Practice List

VT Practice ID	Practice Name
VT07	Middlebury Family Health Center
VT123	Mountain Health Center
VT136	Rainbow Pediatrics
VT392	Vermont Natural Family Health - Salisbury
VT400	UVM Health Network Porter Medical Center Pediatric Primary Care
VT401	UVM Health Network Porter Medical Center Primary Care Brandon
VT402	UVM Health Network Porter Medical Center Primary Care Bristol
VT404	UVM Health Network Porter Medical Center Primary Care Vergennes
VT67	UVM Health Network Porter Medical Center Primary Care Middlebury

Table 15. HSA Town List

Community H.S.A.	Town Name
Middlebury	Addison
Middlebury	Bridport
Middlebury	Bristol
Middlebury	Cornwall
Middlebury	Lincoln
Middlebury	Middlebury
Middlebury	New Haven
Middlebury	Orwell
Middlebury	Panton
Middlebury	Ripton
Middlebury	Salisbury
Middlebury	Shoreham
Middlebury	Vergennes
Middlebury	Waltham
Middlebury	Weybridge
Middlebury	Whiting