

BENNINGTON COMMUNITY COLLABORATIVE

Goal: Build a high-performing system that supports measureable improvement in the health of the community

Purpose: The Bennington Health Service Area (HSA) Community Collaborative (CC) will identify and develop systems to support population health management in the Bennington Health Service Area to improve community health, support appropriate use of resources, and improve personal experience.

Definition of Health (includes individual and community health): *Health is a state of complete physical, mental and social well-being and not merely the absence of disease or infirmity.*

Priorities:

- Implement RiseVT
- Improve MAT capacity
- Improve Well-Child, Well Adolescent Visits
- Increase the use of Care Navigator
- Syringe Services Program

CACH

CHITTENDEN ACCOUNTABLE COMMUNITY FOR HEALTH

MISSION: CACH is accountable for the health and well-being of all people in our County through mutually reinforcing clinical and community initiatives.

VISION: Vermont's Chittenden County is a healthy place to live, work, play, learn, and achieve spiritual and personal growth.

COMMON AGENDA:

- ▶ Safe Access to Medication – Injury Prevention Strategy
- ▶ Sexual Health Awareness and Reduction of Unintended Pregnancies
- ▶ Increase in Adolescent Well Child Visits through School Nurse Partnership



NEK *prosper!*

CALEDONIA + SOUTHERN ESSEX
Accountable Health Community

WE ARE COMMITTED TO OUR SHARED GOAL TO IMPROVE THE HEALTH AND WELL-BEING OF THE PEOPLE IN CALEDONIA AND SOUTHERN ESSEX COUNTIES BY INTEGRATING OUR EFFORTS AND SERVICES WITH AN EMPHASIS ON REDUCING POVERTY IN OUR REGION.

We want our population to be:

Well Nourished:

Fruit and Vegetable Consumption
Diet related chronic conditions

Well Housed

Rent burdened household
Owner burdened households

Mentally Healthy

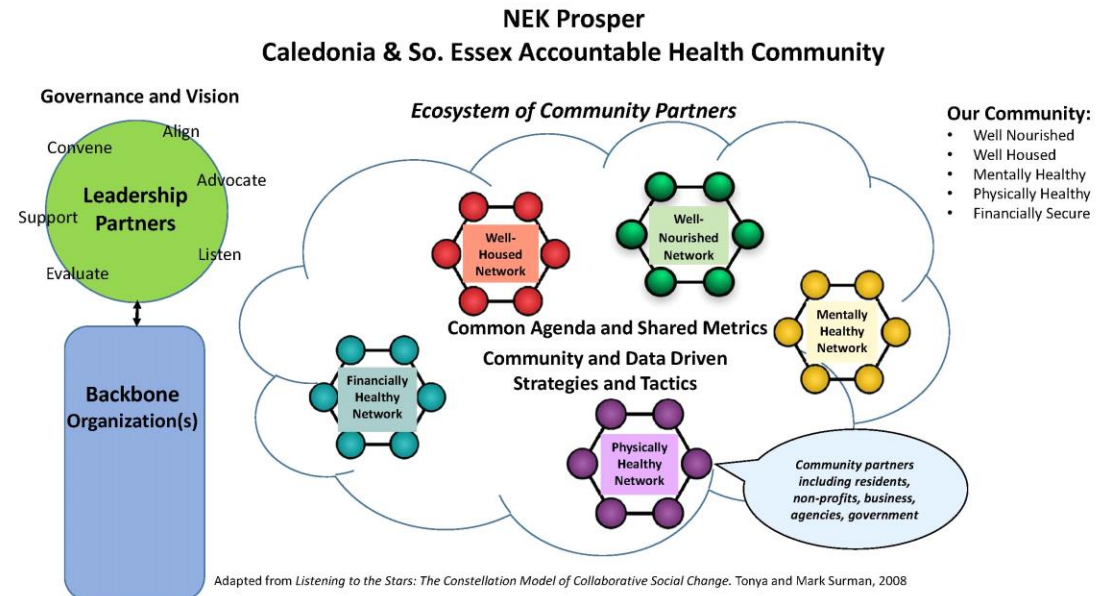
Suicide
Depression
ACEs (trauma and resilience)

Physically Healthy

Physical Activity

Financially Secure

Income, Credit Scores, Access to child care,
Employee Retention and Advancement



COMMUNITY HEALTH ACTION TEAM

Mission/Vision: *Happier and Healthier Together in Addison County*

Common Agenda: *We're using a 3-tier approach with priorities at each level.*

Prevention: *access to mental health services, resilience campaign.*

At Risk: *care coordination and person-centered approaches.*

High-Risk: *housing, treatment for substance use disorder.*

3 to 5 Priorities: *launching a county-wide resilience campaign this fall, housing subcommittee has developed a housing plan, following up on action items from our CHNA*

UPPER VALLEY HSA COMMUNITY HEALTH ACTION TEAM

Mission - Improve the quality of life of the people in the communities we serve.

Common Agenda- subcommittee reports, regional planning for quality improvement

3 to 5 priorities that your ACH is working on- • **Dental Access for Adults on Medicaid, BH in Schools / Trauma-Informed Schools, Diabetes Learning Collaborative**

UPPER NORTHEAST KINGDOM COMMUNITY COUNCIL NEWPORT HEALTH SERVICE AREA

Mission: We are committed to significantly improve the health and well-being of the people in Orleans and northern Essex counties

Vision: through innovation and collaborative effort, we build strong communities supporting healthy and prosperous lives in Orleans and northern Essex counties

Common agenda/goal: Our next generation, whose dreams are community supported, is VT's healthiest and most successful generation

Measurable indicators of success: Financial stability, Educational outcomes, Civic engagement, Health (mental, dental & physical) and Community Assets

FY2019 priorities:

- Adjustment to transitions in leadership among key membership organizations
- Finalize measures for indicators of success using the RBA method
- Determine funding and hire part-time Program Coordinator
- Decide common project and action steps to complete

WINDSOR HSA COMMUNITY COLLABORATIVE

Mission- Increase the Quality of Healthcare, Improve the Patient Care Experience, Contain the Costs of Care, Promote Health Equity

Vision- Improve population health by addressing medical, social, economic and environmental factors that shape health.

Standard Agenda- Updates from Subcommittees, Data and Outcome Measures, Quality Highlight of a member

3 to 5 priorities that your ACH is working on- Hypertension Care, Diabetes Care, Substance Use Disorder, 3-4-50/Prevention work



RANDOLPH EXECUTIVE COMMUNITY COUNCIL

Purpose - Using the Accountable Communities for Health framework, the RECC brings together integral community stakeholders to organize a coordinated effort towards improved community and individual health with an emphasis on prevention. We address population and public health in our area, through the identification of issues and measures which are most relevant, applicable, and challenging for our community members.

Priority Areas – The RECC has workgroups focusing on Nutrition and High Emergency Department Utilization.