

Welcome to the 2014 Blueprint Hospital Service Area (HSA) Profile from the Blueprint for Health, a state-led initiative transforming the way that health care and comprehensive health services are delivered in Vermont. The Blueprint is leading a transition to an environment where all Vermonters have access to a continuum of seamless, effective, and preventive health services.

Blueprint HSA Profiles are based primarily on data from Vermont's all-payer claims database, the Vermont Health Care Uniform Reporting and Evaluation System (VHCURES). Data include all covered commercial and Full Medicaid members attributed to Blueprint practices that began participating on or before June 30, 2014.

The HSA Profile for the adult population covers members ages 18 years and older; pediatric profiles cover members between the ages of 1 and 17 years. Practices have been rolled up to the HSA level.

Utilization and expenditure rates presented in these profiles have been risk adjusted for demographic and health status differences among the reported populations.

This reporting includes only members with a visit to a primary care physician, as identified in VHCURES claims data, during the current reporting year or the prior year. Rates for HSAs reporting fewer than 30 members for a measure are not presented in alignment with NCQA HEDIS guidelines.

The HSA Profile includes new ACO Core measures based on VHCURES and DocSite clinical database.

Demographics & Health Status

	HSA	Statewide
Average Members	19,129	70,519
Average Age	9.0	9.1
% Female	49.0	49.0
% Medicaid	40.1	52.8
% with Selected Chronic Conditions	17.5	19.3
Health Status (CRG)		
% Healthy	76.1	76.4
% Acute or Minor Chronic	14.1	13.9
% Moderate Chronic	8.6	8.6
% Significant Chronic	1.0	1.0
% Cancer or Catastrophic	0.2	0.2

Table 1: This table provides comparative information on the demographics and health status of the HSA and of the state as a whole. Included measures reflect the types of information used to generate adjusted rates: age, gender, maternity status, and health status.

Average Members serves as this table's denominator and adjusts for partial lengths of enrollment during the year. In addition, special attention has been given to adjusting for Medicaid. This includes adjustment for each member's enrollment in Medicaid, the member's practice's percentage of membership that is Medicaid, and the degree to which the member required special Medicaid services that are not found in commercial populations (e.g., day treatment, residential treatment, case management, school-based services, and transportation).

The % with Selected Chronic Conditions measure indicates the proportion of members identified through the claims data as having one or more of eight selected chronic conditions: asthma, chronic obstructive pulmonary disease, congestive heart failure, coronary heart disease, hypertension, diabetes, depression, and attention deficit disorder.

The Health Status (CRG) measure aggregates 3M™ Clinical Risk Grouper (CRG) classifications for the year for the purpose of generating adjusted rates. Aggregated risk classification groups include: Healthy, Acute (e.g., ear, nose, throat infection) or Minor Chronic (e.g., minor chronic joint pain), Moderate Chronic (e.g., diabetes), Significant Chronic (e.g., diabetes and CHF), and Cancer (e.g., breast cancer, colorectal cancer) or Catastrophic (e.g., HIV, muscular dystrophy, cystic fibrosis).

Total Expenditures per Capita

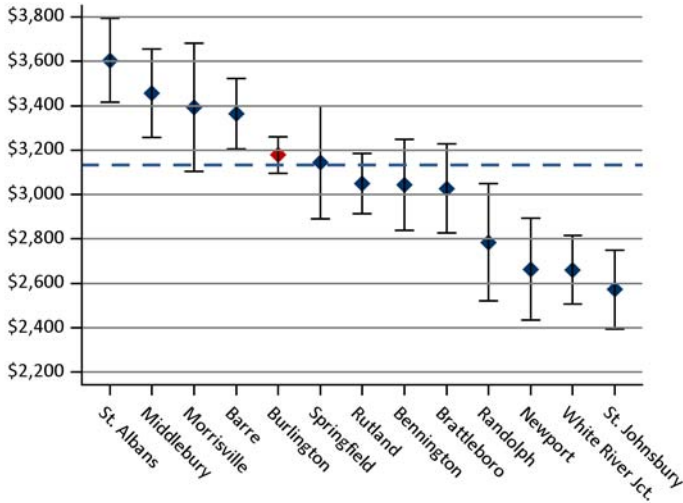


Figure 1: Presents annual risk-adjusted rates, including 95% confidence intervals, with expenditures capped statewide for outlier patients. Expenditures include both plan payments and member out-of-pocket payments (i.e., copay, coinsurance, and deductible). The blue dashed line indicates the statewide average.

Total Expenditures by Major Category

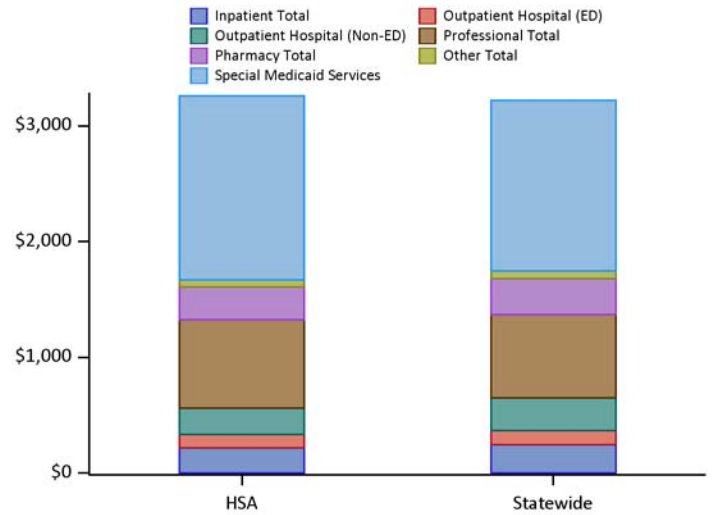


Figure 2: Presents annual risk-adjusted rates for the major components of cost (as shown in Figure 1) with expenditures capped statewide for outlier patients. Some services provided by Medicaid (e.g., case management, transportation) are reported separately as Special Medicaid Services (SMS).

Total Expenditures (Excluding SMS)

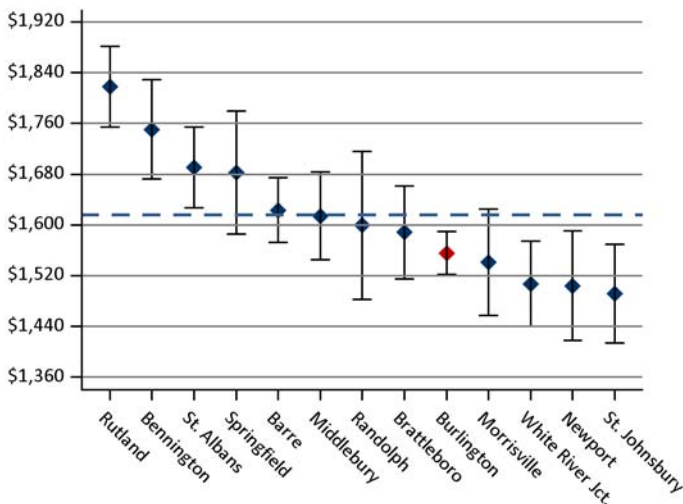


Figure 3: Presents annual risk-adjusted rates, including 95% confidence intervals, with expenditures capped statewide for outlier patients. Expenditures include both plan payments and member out-of-pocket payments (i.e., copay, coinsurance, and deductible) and exclude Special Medicaid Services. The blue dashed line indicates the statewide average.

Total Resource Use Index (RUI) (Excluding SMS)

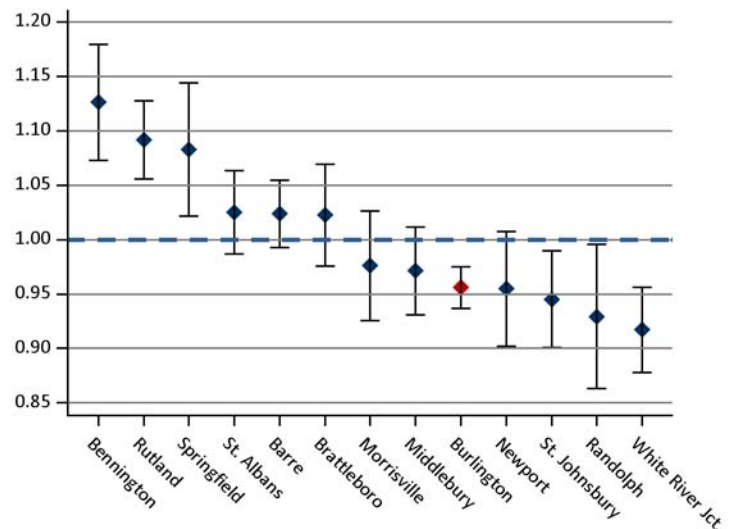


Figure 4: Presents annual risk-adjusted rates, including 95% confidence intervals. Since price per service varies widely, a measure of expenditures based on resource use — Total Resource Use Index (RUI) — is included. RUI reflects an aggregated capped cost based on utilization and intensity of services across major components of care and excludes Special Medicaid Services. The HSAs are indexed to the statewide average (1.00), which is indicated by the blue dashed line.

Annual Total Expenditures per Capita (Excluding SMS) vs. Resource Use Index (RUI)

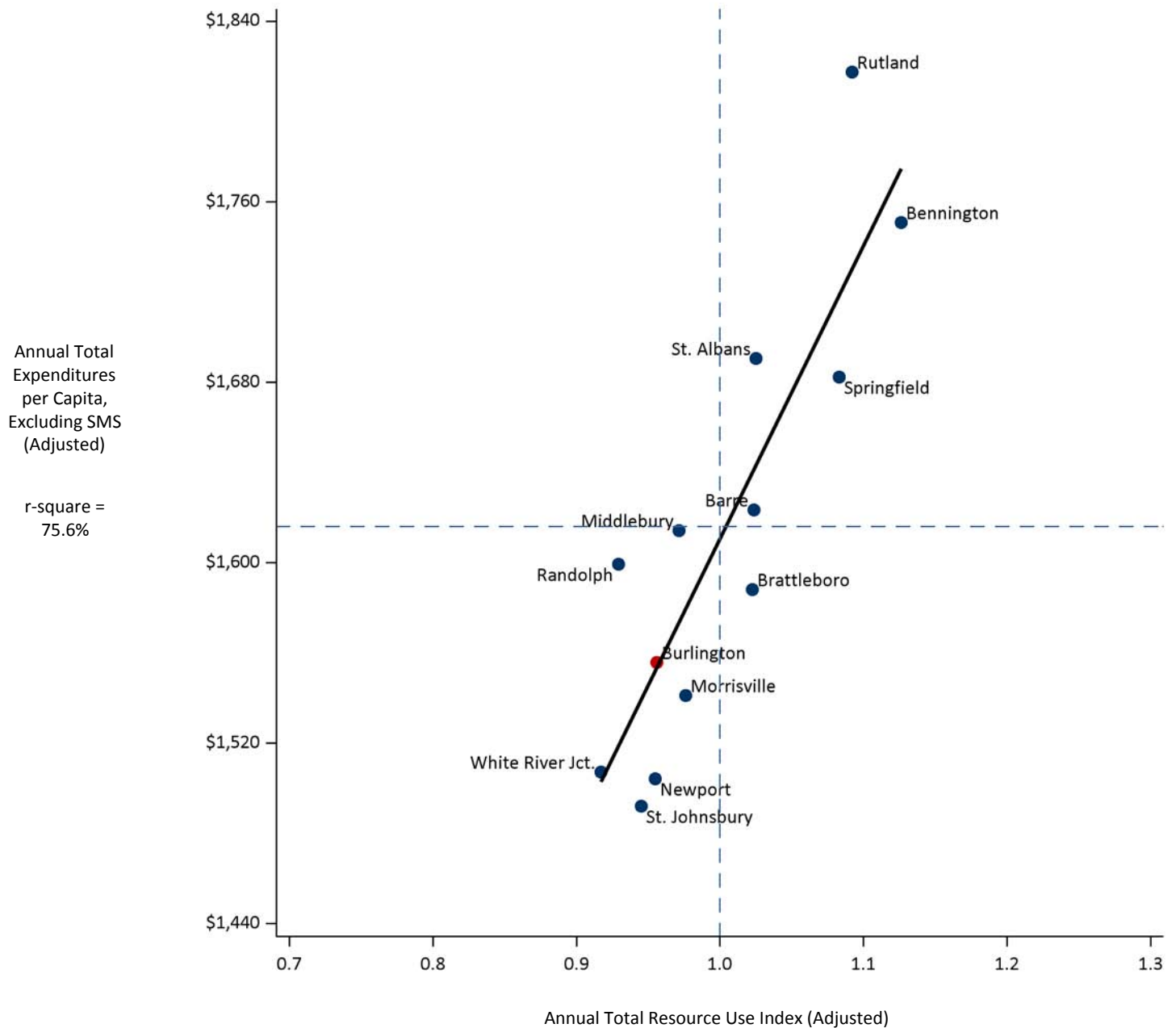
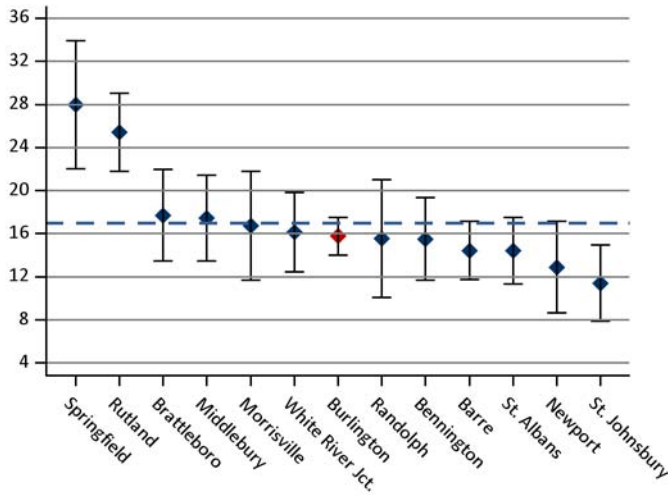


Figure 5: This graphic demonstrates the relationship between risk-adjusted expenditures excluding SMS and risk-adjusted utilization for each of the HSAs in Vermont. This graphic illustrates the HSA's risk-adjusted rate (i.e., the red dot) compared to those of all other HSAs statewide (i.e., the blue dots). The dashed lines show the average expenditures per capita and average Resource Use Index statewide (i.e., 1.0). HSAs with higher expenditures and utilization are in the upper right-hand quadrant while HSAs with lower expenditures and utilization are in the lower left-hand quadrant. An RUI value greater than 1.0 indicates higher than average utilization; conversely, a value lower than 1.0 indicates lower than average utilization. A trend line has been included in the graphic, which demonstrates that, in general, HSAs with higher risk-adjusted utilization had higher risk-adjusted expenditures.

Legend

- Burlington
- All other Blueprint HSAs statewide

Inpatient Discharges



Outpatient ED Visits

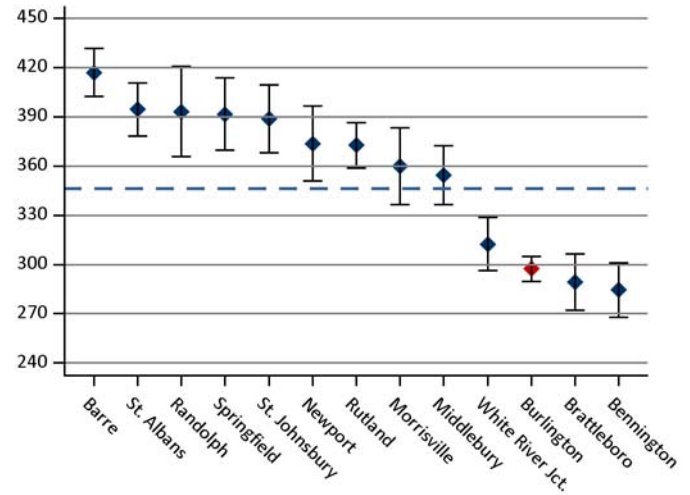


Figure 6: Presents annual risk-adjusted rates, including 95% confidence intervals, of inpatient discharges per 1,000 members. Additional detail measures for inpatient utilization — Inpatient Days, Inpatient Readmissions within 30 Days, and Inpatient Discharges for Ambulatory Care Sensitive (ACS) Conditions — can be found in **Table 4**. The blue dashed line indicates the statewide average.

Figure 7: Presents annual risk-adjusted rates, including 95% confidence intervals, of outpatient emergency department (ED) visits per 1,000 members. An additional detail measure — Outpatient Potentially Avoidable ED Visits — can be found in **Table 4**. The blue dashed line indicates the statewide average.

Advanced Imaging (MRIs, CT Scans)

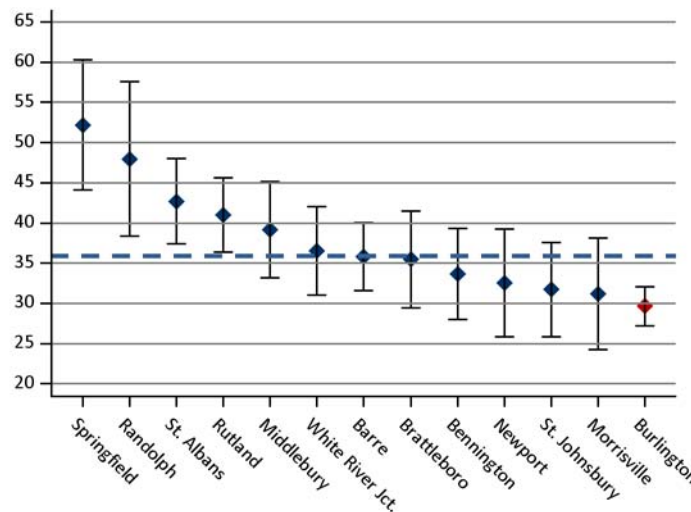


Figure 8: Presents annual risk-adjusted rates, including 95% confidence intervals, for advanced imaging diagnostic tests (i.e., MRIs, CT scans) per 1,000 members. The blue dashed line indicates the statewide average.

Well-Child Visits

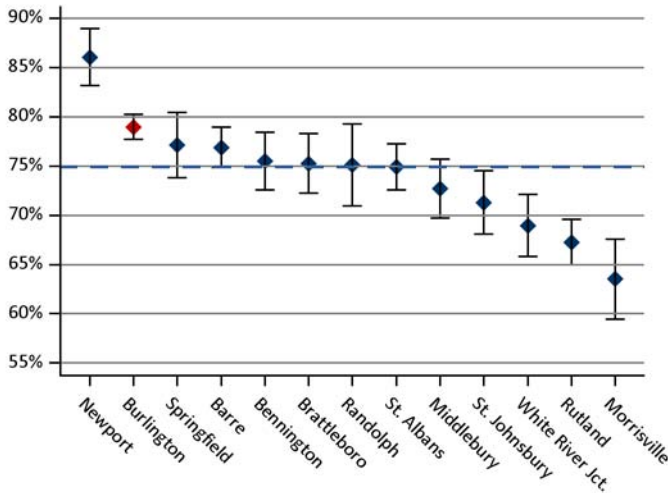


Figure 9: This measure assesses the percentage, including 95% confidence intervals, of members, ages 3–6 years, who received one or more well-child visits during the measurement year. The blue dashed line indicates the statewide average.

Adolescent Well-Care Visits (Core-2)

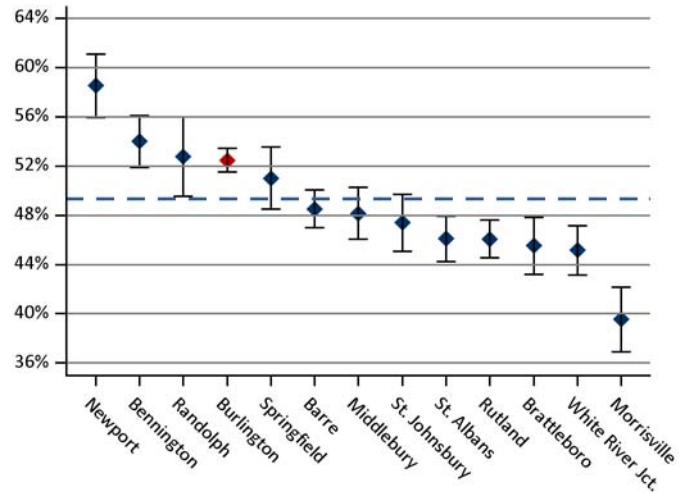


Figure 10: This measure assesses the percentage, including 95% confidence intervals, of members, ages 12–21 years, who received one or more well-care visits with a primary care practitioner or OB/GYN during the measurement year. (Note that, due to the age ranges for this ACO measure, members above the age of 17 years, not typically represented in pediatric profiles, are included in these rates.) The blue dashed line indicates the statewide average.

Developmental Screening in First 3 Years of Life (Core-8)

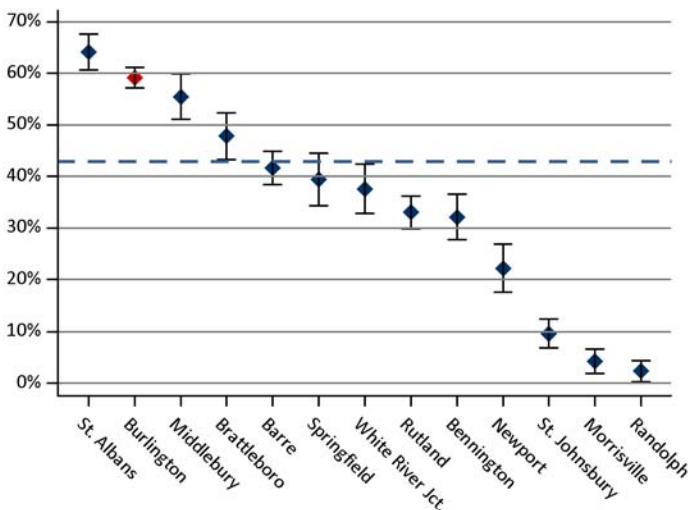


Figure 11: Presents the proportion, including 95% confidence intervals, of continuously enrolled children screened for risk of developmental, behavioral, and social delays using a standardized screening tool in each of the first three years of life. The blue dashed line indicates the statewide average.

Chlamydia Screening in Women (Core-7)

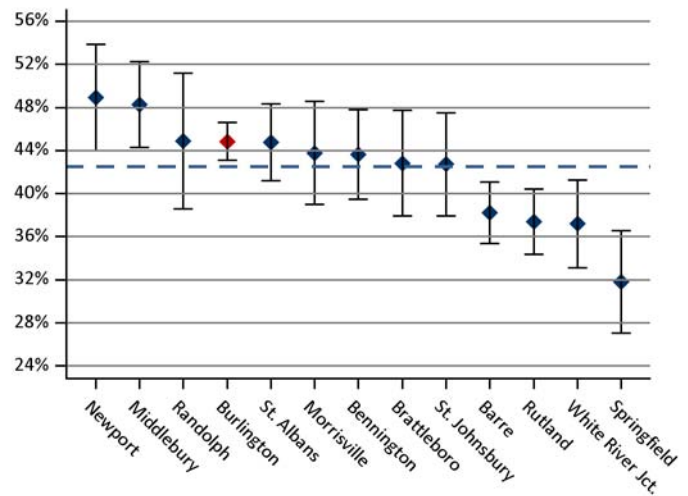


Figure 12: Presents the proportion, including 95% confidence intervals, of continuously enrolled females, ages 16–24 years, who were identified as sexually active and who had at least one test for chlamydia during the measurement year. (Note that, due to the age ranges for this ACO measure, females above the age of 17 years, not typically represented in pediatric profiles, are included in these rates.) The blue dashed line indicates the statewide average.

Appropriate Testing for Pharyngitis (Core-13)

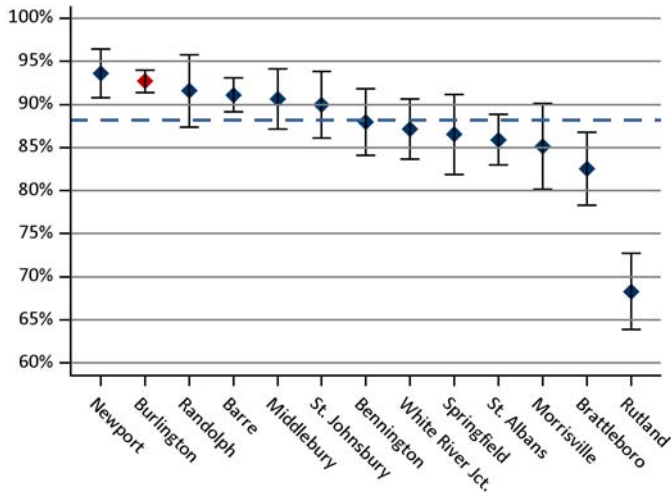


Figure 13: This measure assesses the percentage, including 95% confidence intervals, of children, ages 2–17 years, who were diagnosed with pharyngitis, dispensed an antibiotic, and received a Group A streptococcus (strep) test for the episode. A higher rate represents appropriate testing for children with pharyngitis. The blue dashed line indicates the statewide average.

Appropriate Treatment for Upper Respiratory Infection

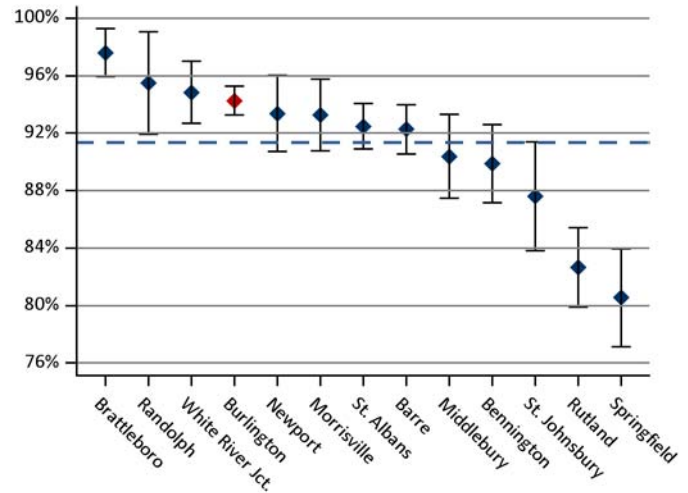


Figure 14: This measure assesses the percentage, including 95% confidence intervals, of children, ages 1–17 years, who were diagnosed with upper respiratory infection (URI) and were not dispensed an antibiotic prescription. A higher rate indicates appropriate treatment of children with URI (i.e., the proportion for whom antibiotics were not prescribed). The blue dashed line indicates the statewide average.

The following tables provide greater detail on the annual risk-adjusted rates presented in the preceding figures.

Table 2. Expenditure Measures (Adjusted)

Measure	HSA			Statewide		
	Rate per Capita	95% LCL	95% UCL	Rate per Capita	95% LCL	95% UCL
Total	\$3,178	\$3,096	\$3,261	\$3,132	\$3,085	\$3,179
Inpatient Total	\$216	\$167	\$265	\$243	\$218	\$269
Inpatient Mental Health	\$69	\$44	\$95	\$92	\$77	\$107
Inpatient Maternity	\$3	\$2	\$5	\$5	\$2	\$7
Inpatient Surgical	\$97	\$53	\$141	\$98	\$73	\$123
Inpatient Medical	\$58	\$42	\$75	\$57	\$48	\$66
Outpatient Total	\$346	\$329	\$364	\$408	\$399	\$417
Outpatient Hospital Mental Health	\$8	\$6	\$10	\$11	\$10	\$12
Outpatient Hospital ED	\$115	\$109	\$121	\$125	\$122	\$128
Outpatient Hospital Surgery	\$76	\$67	\$85	\$111	\$105	\$117
Outpatient Hospital Radiology	\$48	\$42	\$54	\$54	\$51	\$57
Outpatient Hospital Laboratory	\$27	\$25	\$29	\$32	\$31	\$34
Outpatient Hospital Pharmacy	\$25	\$20	\$30	\$18	\$16	\$21
Outpatient Hospital Other	\$120	\$108	\$132	\$169	\$162	\$176
Professional Non-Mental Health Total	\$592	\$582	\$601	\$562	\$558	\$566
Professional Physician Total	\$425	\$417	\$433	\$416	\$413	\$420
Professional Physician Inpatient	\$21	\$14	\$29	\$21	\$17	\$25
Professional Physician Outpatient Facility	\$44	\$39	\$49	\$48	\$45	\$50
Professional Physician Office Visit	\$339	\$334	\$344	\$324	\$322	\$326
Professional Non-Physician	\$166	\$162	\$170	\$144	\$142	\$146
Professional Mental Health Provider	\$170	\$163	\$177	\$155	\$151	\$159
Pharmacy Total	\$282	\$273	\$292	\$312	\$306	\$318
Pharmacy Psych Medication	\$110	\$104	\$116	\$123	\$119	\$127
Other Total	\$62	\$54	\$70	\$66	\$61	\$70
Special Medicaid Services	\$1,591	\$1,516	\$1,666	\$1,475	\$1,433	\$1,517
Mental Health Substance Combined*	\$327	\$312	\$343	\$342	\$333	\$351

* The *Mental Health Substance Combined* measure is the sum of all expenditures associated with medical and pharmacy services for mental health / substance abuse.

Table 3. Total Resource Use Index (RUI) (Adjusted)

Measure	HSA			Statewide		
	Index Ratio	95% LCL	95% UCL	Index Ratio	95% LCL	95% UCL
Total	0.96	0.94	0.98	1.00	0.99	1.01
Inpatient	0.86	0.72	1.00	1.00	0.91	1.09
Outpatient Facility	0.87	0.83	0.91	1.00	0.98	1.02
Professional	1.01	0.99	1.03	1.00	0.99	1.01
Pharmacy	0.92	0.88	0.95	1.00	0.98	1.02

Table 4. Utilization Measures (Adjusted)

Measure	HSA			Statewide		
	Rate per 1,000	95% LCL	95% UCL	Rate per 1,000	95% LCL	95% UCL
Inpatient Discharges	15.8	14.0	17.5	17.0	16.0	17.9
Inpatient Discharges for Ambulatory Care Sensitive Conditions	2.5	1.8	3.2	2.8	2.4	3.1
Inpatient Days	100.9	96.4	105.4	119.1	116.6	121.7
Inpatient Readmissions within 30 Days	2.0	1.4	2.6	2.4	2.0	2.8
Outpatient ED Visits	297.3	289.6	305.1	346.1	341.8	350.5
Outpatient Potentially Avoidable ED Visits	63.5	60.0	67.1	79.1	77.0	81.1
Outpatient ED Ambulatory Care Sensitive Conditions	20.1	18.1	22.1	24.9	23.7	26.0
Non-Hospital Outpatient Visits	5,429.7	5,396.6	5,462.7	5,256.5	5,239.6	5,273.4
Primary Care Encounters	3,792.9	3,765.3	3,820.5	3,813.1	3,798.7	3,827.5
Medical Specialist Encounters	127.6	122.5	132.7	127.5	124.8	130.1
Surgical Specialist Encounters	284.8	277.2	292.4	322.7	318.5	326.9
Standard Imaging	237.3	230.4	244.2	271.6	267.7	275.4
Advanced Imaging	29.7	27.2	32.1	35.9	34.5	37.3
Echography	44.8	41.8	47.8	45.4	43.8	46.9
Colonoscopy	1.4	0.9	1.9	1.5	1.2	1.8

Table 5. Effective, Preventive, & ACO Measures

Measure	HSA				Statewide			
	N	Rate %	95% LCL	95% UCL	N	Rate %	95% LCL	95% UCL
Well-Child Visits	4,074	79%	78%	80%	15,123	75%	74%	76%
Well-Child Visits - Commercial	2,095	84%	83%	86%	5,604	81%	80%	82%
Well-Child Visits - Medicaid	1,979	73%	71%	75%	9,519	72%	71%	72%
Adolescent Well-Care Visit (Core-2)	10,458	52%	51%	53%	37,398	49%	49%	50%
Adolescent Well-Care Visit - Commercial	7,186	53%	52%	55%	21,099	50%	50%	51%
Adolescent Well-Care Visit - Medicaid	3,272	50%	49%	52%	16,299	48%	47%	49%
Developmental Screening in First 3 Years of Life (Core-8)	2,353	59%	57%	61%	8,552	43%	42%	44%
Developmental Screening - Commercial	1,087	63%	61%	66%	2,723	50%	48%	52%
Developmental Screening - Medicaid	1,266	55%	53%	58%	5,829	40%	38%	41%
Chlamydia Screening in Women (Core-7)	3,163	45%	43%	47%	10,220	43%	42%	43%
Chlamydia Screening in Women - Commercial	2,344	43%	41%	45%	6,468	41%	40%	42%
Chlamydia Screening in Women - Medicaid	819	49%	46%	53%	3,752	45%	43%	47%
Appropriate Testing for Pharyngitis (Core-13)	1,667	93%	91%	94%	6,047	88%	87%	89%
Appropriate Testing for Pharyngitis - Commercial	929	94%	92%	95%	2,471	91%	90%	92%
Appropriate Testing for Pharyngitis - Medicaid	738	91%	89%	94%	3,576	86%	85%	87%
Appropriate Treatment for Upper Respiratory Infection	2,199	94%	93%	95%	8,673	91%	91%	92%
Appropriate Treatment for Upper Respiratory Infection - Commercial	1,030	94%	93%	96%	2,775	92%	91%	93%
Appropriate Treatment for Upper Respiratory Infection - Medicaid	1,169	94%	93%	96%	5,898	91%	90%	92%

Table 6. ACO Measure Reference Table

VT Measure ID	Medicare Shared Savings Program Measure ID	Measure Name	Nationally Recognized/ Endorsed	Included in HSA Profile?	Measure Description
Core-1		Plan All-Cause Readmissions	NQF #1768, HEDIS measure	Adult	For members 18 years and older, the number of acute inpatient stays during the measurement year that were followed by an acute readmission for any diagnosis within 30 days.
Core-2		Adolescent Well-Care Visit	HEDIS measure	Pediatric	The percentage of members 12-21 years who had at least one comprehensive well-care visit with a PCP or OB/GYN during the measurement year.
Core-3	MSSP-29	Ischemic Vascular Disease (IVD): Complete Lipid Panel (Screening Only)	NQF #0075, NCQA	Adult	The percentage of members 18-75 years who were discharged alive for acute myocardial infarction, coronary artery bypass grafting, or percutaneous coronary intervention in the year prior to the measurement year or who had a diagnosis of Ischemic Vascular Disease during the measurement year and one year prior, who had LDL-C screening.
Core-4		Follow-up after Hospitalization for Mental Illness, 7 Day	NQF #0576, HEDIS measure	Adult	The percentage of discharges for members 6 years and older who were hospitalized for treatment of selected mental illness diagnoses and who had an outpatient visit, an intensive outpatient encounter, or partial hospitalization with a mental health practitioner.
Core-5		Initiation & Engagement of Alcohol and Other Drug Dependence Treatment (a) Initiation, (b) Engagement	NQF #0004, HEDIS measure	Adult	(a) The percentage of adolescent and adult members with a new episode of alcohol or other drug (AOD) dependence who received initiation of AOD treatment within 14 days. (b) The percentage of adolescent and adult members with a new episode of alcohol or other drug (AOD) dependence who initiated treatment and had two additional services with a diagnosis of AOD within 30 days of the initiation visit.
Core-6		Avoidance of Antibiotic Treatment for Adults with Acute Bronchitis	NQF #0058, HEDIS measure	Adult	The percentage of adults 18-64 years with a diagnosis of acute bronchitis who were not dispensed an antibiotic.
Core-7		Chlamydia Screening in Women	NQF #0033, HEDIS measure	Adult and Pediatric	The percentage of women 16-24 years who were identified as sexually active and who had at least one test for chlamydia during the measurement period.
Core-8		Developmental Screening in the First Three Years of Life	NQF #1448	Pediatric	The percentage of children screened for risk of developmental, behavioral, and social delays using a standardized screening tool in the 12 months preceding their first, second, or third birthday.
Core-10	MSSP-9	Ambulatory Sensitive Condition Admissions: Chronic Obstructive Pulmonary Disease or Asthma in Older Adults	NQF, AHRQ (Prevention Quality Indicator (PQI) #5)	Adult	All discharges with an ICD-9-CM principal diagnosis code for COPD or asthma in adults ages 40 years and older, for ACO assigned or aligned Medicare fee-for-service (FFS) beneficiaries with COPD or asthma. This is an observed rate of discharges per 1,000 members.
Core-11	MSSP-20	Mammography / Breast Cancer Screening	NQF #0031, HEDIS measure	Adult	The percentage of women 50-74 years who had a mammogram to screen for breast cancer in the last two years.
Core-12		Rate of Hospitalization for Ambulatory Care Sensitive Conditions: PQI Chronic Composite	NQF, AHRQ (Prevention Quality Indicator (PQI) Chronic Composite)	Adult	Prevention Quality Indicators' (PQI) overall composite per 1,000 population, ages 18 years and older; includes admissions for one of the following conditions: diabetes with short-term complications, diabetes with long-term complications, uncontrolled diabetes without complications, diabetes with lower-extremity amputation, chronic obstructive pulmonary disease, asthma, hypertension, heart failure, angina without a cardiac procedure, dehydration, bacterial pneumonia, or urinary tract infection.

Table 6. ACO Measure Reference Table, Continued

VT Measure ID	Medicare Shared Savings Program Measure ID	Measure Name	Nationally Recognized/ Endorsed	Included in HSA Profile?	Measure Description
Core-13		Appropriate Testing for Children with Pharyngitis	NQF #0002	Pediatric	Percentage of children 2-18 years who were diagnosed with pharyngitis, dispensed an antibiotic and received a group A strep test for the episode.
Core-14		Childhood Immunization Status (Combo 10)	NQF #0038, HEDIS measure	No	The percentage of children 2 years who had each of nine key vaccinations (e.g., MMR, HiB, HepB, etc.).
Core-15		Pediatric Weight Assessment and Counseling	NQF #0024	No	The percentage of members 3-17 years who had an outpatient visit with a PCP or OB/GYN and who had evidence of BMI percentile documentation, counseling for nutrition, and counseling for physical activity.
Core-16	MSSP-22,-23,-24,-25,-26	Diabetes Composite (D5) (All-or-Nothing Scoring): Hemoglobin A1c control (<8%), LDL control (<100), Blood Pressure <140/90, Tobacco Non-Use, Aspirin Use	NQF #0729 (composite)	Adult	(a) MSSP-22: Percentage of patients 18-75 years with diabetes who had HbA1c <8% at most recent visit; (b) MSSP-23: Percentage of patients 18-75 years with diabetes who had LDL <100 mg/dL at most recent visit; (c) MSSP-24: Percentage of patients 18-75 years with diabetes who had blood pressure <140/90 at most recent visit; (d) MSSP-25: Percentage of patients 18-75 years with diabetes who were identified as a non-user of tobacco in measurement year; (e) MSSP-26: Percentage of patients 18-75 years with diabetes and IVF who used aspirin daily -- Aspirin use was not included as part of the profile composite.
Core-17	MSSP-27	Diabetes Mellitus: Hemoglobin A1c Poor Control (>9%)	NQF #0059, NCQA	Adult	Percentage of patients 18-75 years with diabetes whose HbA1c was in poor control >9%.
Core-18	MSSP-19	Colorectal Cancer Screening	NQF #0034, NCQA HEDIS measure	No	The percentage of members 50-75 years who had appropriate screening for colorectal cancer.
Core-19	MSSP-18	Depression Screening and Follow-Up	NQF #0418, CMS	No	Patients 12 years and older who had negative screening or positive screening for depression completed in the measurement year with an age-appropriate standardized tool. Follow-up for positive screening must be documented same day as screening.
Core-20	MSSP-16	Adult Weight Screening and Follow-Up	NQF #0421, CMS	No	Patients 18 years and older who had BMI calculated during the last visit in the measurement year or within the prior 6 months. In cases where the BMI is abnormal, a follow-up plan must be documented during the visit the BMI was calculated or within the prior 6 months.
Core-21		Access to Care Composite	NCQA	No	NCQA Survey - percentage of patients who could get appointments or answers to questions from providers when needed.
Core-22		Communication Composite	NCQA	No	NCQA Survey - percentage of patients who felt they received good communication from providers.
Core-23		Shared Decision-Making Composite	NCQA	No	NCQA Survey - percentage of patients whose provider helped them make decisions about prescription medications.
Core-24		Self-Management Support Composite	NCQA	No	NCQA Survey - percentage of patients whose provider talked to them about specific health goals and barriers.
Core-25		Comprehensiveness Composite	NCQA	No	NCQA Survey - percentage of patients whose provider talked to them about depression, stress, and other mental health issues.
Core-26		Office Staff Composite	NCQA	No	NCQA Survey - percentage of patients who found the clerks and receptionists at their provider's office to be helpful and courteous.

Table 6. ACO Measure Reference Table, Continued

VT Measure ID	Medicare Shared Savings Program Measure ID	Measure Name	Nationally Recognized/ Endorsed	Included in HSA Profile?	Measure Description
Core-27		Information Composite	NCQA	No	NCQA Survey - percentage of patients who received information from their provider about what to do if care was needed in the off hours and reminders between visits.
Core-28		Coordination of Care Composite	NCQA	No	NCQA Survey - percentage of patients whose providers followed-up about test results, seemed informed about specialty care, and talked at each visit about prescription medication.
Core-29		Specialist Composite	NCQA	No	NCQA Survey - percentage of patients who found it easy to get appointments with specialists and who found that their specialist seemed to know important information about their medical history.
Core-30		Cervical Cancer Screening	NQF #0032, HEDIS measure	Adult	The percentage of females 21-64 years who received one or more PAP tests to screen for cervical cancer in the measurement year or two years prior to the measurement year.
Core-31	MSSP-30	Ischemic Vascular Disease (IVD): Use of Aspirin or Another Antithrombotic	NQF #0068, NCQA	No	Percentage of patients 18 years and older with IVD who had documentation of using aspirin or another antithrombotic during the measurement year.
Core-35	MSSP-14	Influenza Vaccination	NQF #0041, AMA-PCPI	Adult	Patients 6 months and older with an outpatient visit between October and March who received an influenza vaccine.
Core-36	MSSP-17	Tobacco Use Assessment and Cessation Intervention	NQF #0028, AMA-PCPI	No	Percentage of patients 18 years and older who had a negative tobacco screen or positive tobacco screen with cessation intervention in the two years prior to the measurement year.
Core-38	MSSP-32	Drug Therapy for Lowering LDL Cholesterol	NQF #0074	No	Percentage of patients 18 years and older with a diagnosis of CAD and an outpatient visit in the measurement year whose LDL-C <100 mg/dL or LDL-C ≥100 mg/dL and who received a prescription of a statin in the measurement year.
Core-38	MSSP-33	ACE Inhibitor or ARB Therapy for Patients with CAD and Diabetes and/or LVSD	NQF #0066	No	Percentage of patients 18 years and older with a diagnosis of CAD and a LVEF < 40% or diagnosis of CAD and diabetes who received a prescription of ACE/ARB medication in the measurement year.
Core-39	MSSP-28	Percent of Beneficiaries With Hypertension Whose BP < 140/90 mmHg	NQF #0018, NCQA HEDIS measure	Adult	Percentage of patients 18-85 years with hypertension whose BP was in control <140/90 mmHg.
Core-40	MSSP-21	Screening for High Blood Pressure and Follow-Up Plan Documented	Not NQF-endorsed; MSSP	No	Percentage of patients 18 years and older seen during the measurement period who were screened for high blood pressure and a recommended follow-up plan is documented based on the current blood pressure reading as indicated.
Core-47	MSSP-13	Falls: Screening for Fall Risk	NQF #0101	No	Percentage of patients 65 years and older who had any type of falls screening in the measurement year.
Core-48	MSSP-15	Pneumonia Vaccination (Ever Received)	NQF #0043	Adult	Patients 65 years and older who had documentation of ever receiving a pneumonia vaccine.

Table 6. ACO Measure Reference Table, Continued

VT Measure ID	Medicare Shared Savings Program Measure ID	Measure Name	Nationally Recognized/ Endorsed	Included in HSA Profile?	Measure Description
	MSSP-1	CG CAHPS: Getting Timely Care, Appointments, and Information	NQF #0005, AHRQ	No	CMS Survey - Getting Timely Care, Appointments, and Information
	MSSP-2	CG CAHPS: How Well Your Doctors Communicate	NQF #0005, AHRQ	No	CMS Survey - How Well Your Doctors Communicate
	MSSP-3	CG CAHPS: Patients' Rating of Doctor	NQF #0005, AHRQ	No	CMS Survey - Patients' Rating of Doctor
	MSSP-4	CG CAHPS: Access to Specialists	NQF #0005, AHRQ	No	CMS Survey - Access to Specialists
	MSSP-5	CG CAHPS: Health Promotion and Education	NQF #0005, AHRQ	No	CMS Survey - Health Promotion and Education
	MSSP-6	CG CAHPS: Shared Decision Making	NQF #0005, AHRQ	No	CMS Survey - Shared Decision Making
	MSSP-7	CG CAHPS: Health Status / Functional Status	NQF #0006, AHRQ	No	CMS Survey - Health Status/Functional Status
	MSSP-8	Risk-Standardized, All Condition Readmission	CMS, not submitted to NQF (adapted from NQF #1789)	No	All discharges with an ICD-9-CM principal diagnosis code for COPD or asthma in adults ages 40 years and older, for ACO assigned or aligned Medicare fee-for-service (FFS) beneficiaries with COPD or asthma. This is an observed rate of discharges per 1,000 members.
	MSSP-10	Ambulatory Sensitive Condition Admissions: Congestive Heart Failure	NQF #0277, AHRQ (Prevention Quality Indicator (PQI) #8)	Adult	All discharges with an ICD-9-CM principal diagnosis code for CHF in adults ages 18 years and older, for ACO assigned or aligned Medicare fee-for-service (FFS) beneficiaries with CHF. This is an observed rate of discharges per 1,000 members.
	MSSP-11	Percent of Primary Care Physicians who Successfully Qualify for an EHR Program Incentive Payment	CMS EHR Incentive Program Reporting	No	Percentage of Accountable Care Organization (ACO) primary care physicians (PCPs) who successfully qualify for either a Medicare or Medicaid Electronic Health Record (EHR) Program incentive payment.
	MSSP-12	Medication Reconciliation: Reconciliation After Discharge from an Inpatient Facility	NQF #0554	No	Percentage of patients 65 years and older who were discharged from any inpatient facility in the measurement year and had an outpatient visit within 30 days of the discharge who had documentation in the outpatient medical record of reconciliation of discharge medications with current outpatient medications during a visit within 30 days of discharge.
	MSSP-31	Heart Failure: Beta-Blocker Therapy for Left Ventricular Systolic Dysfunction (LVSD)	NQF #0083	No	Percentage of patients 18 years and older with a diagnosis of heart failure who also had LVSD (LVEF < 40%) and who were prescribed beta-blocker therapy.
M&E-2		Comprehensive Diabetes Care: Eye Exams for Diabetics	NQF #0055, HEDIS measure	Adult	Percentage of patients with diabetes 18-75 years who received an eye exam for diabetic retinal disease during the measurement year.
M&E-3		Comprehensive Diabetes Care: Medical Attention for Nephropathy	NQF #0062, HEDIS measure	Adult	Percentage of patients with diabetes 18-75 years who received a nephropathy screening test during the measurement year.